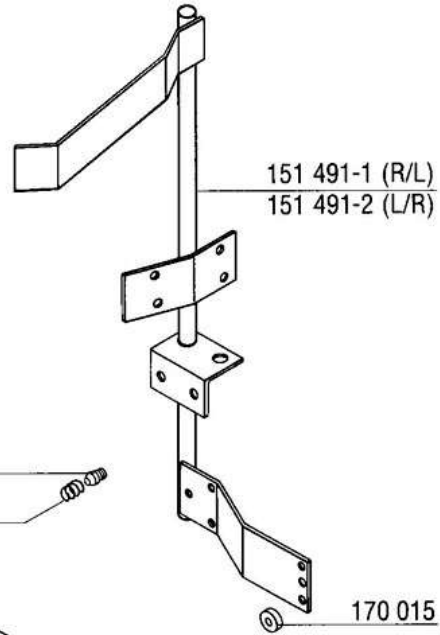
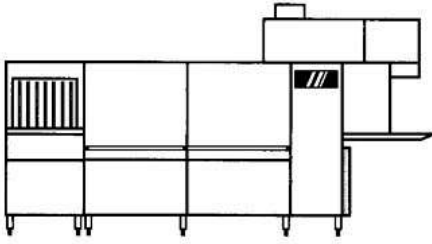


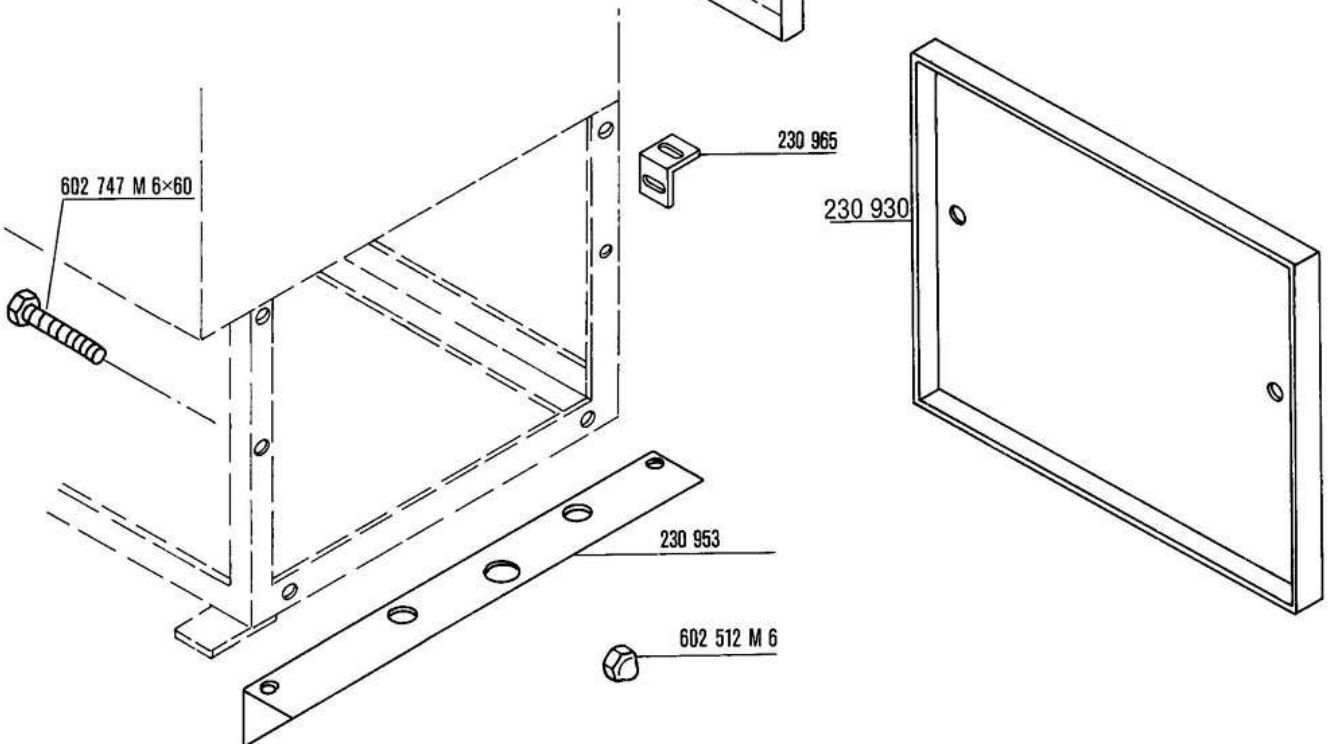
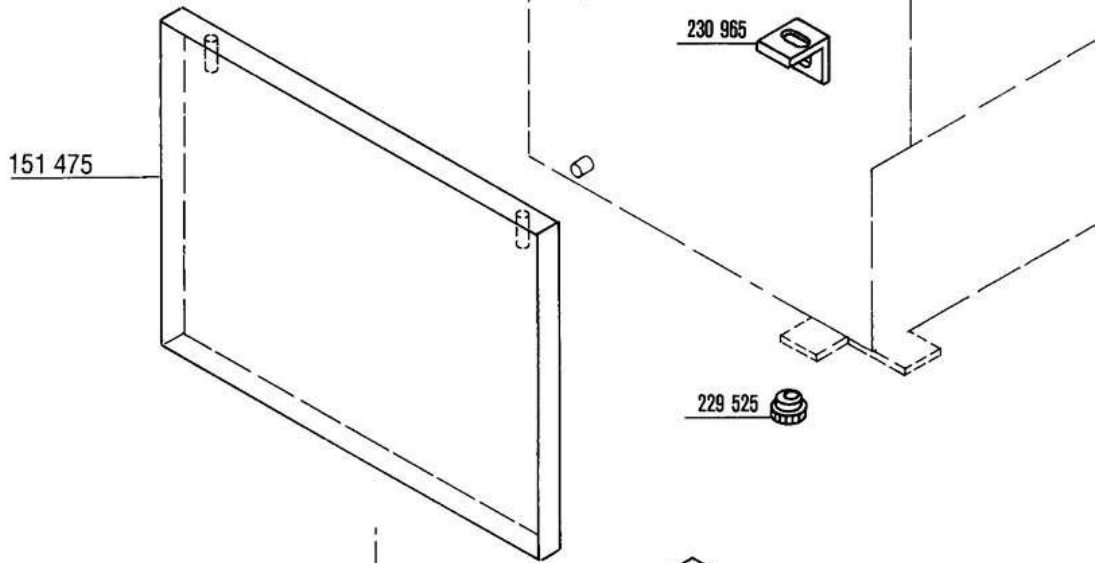
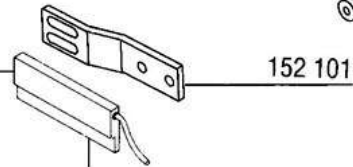
# **HOBART**

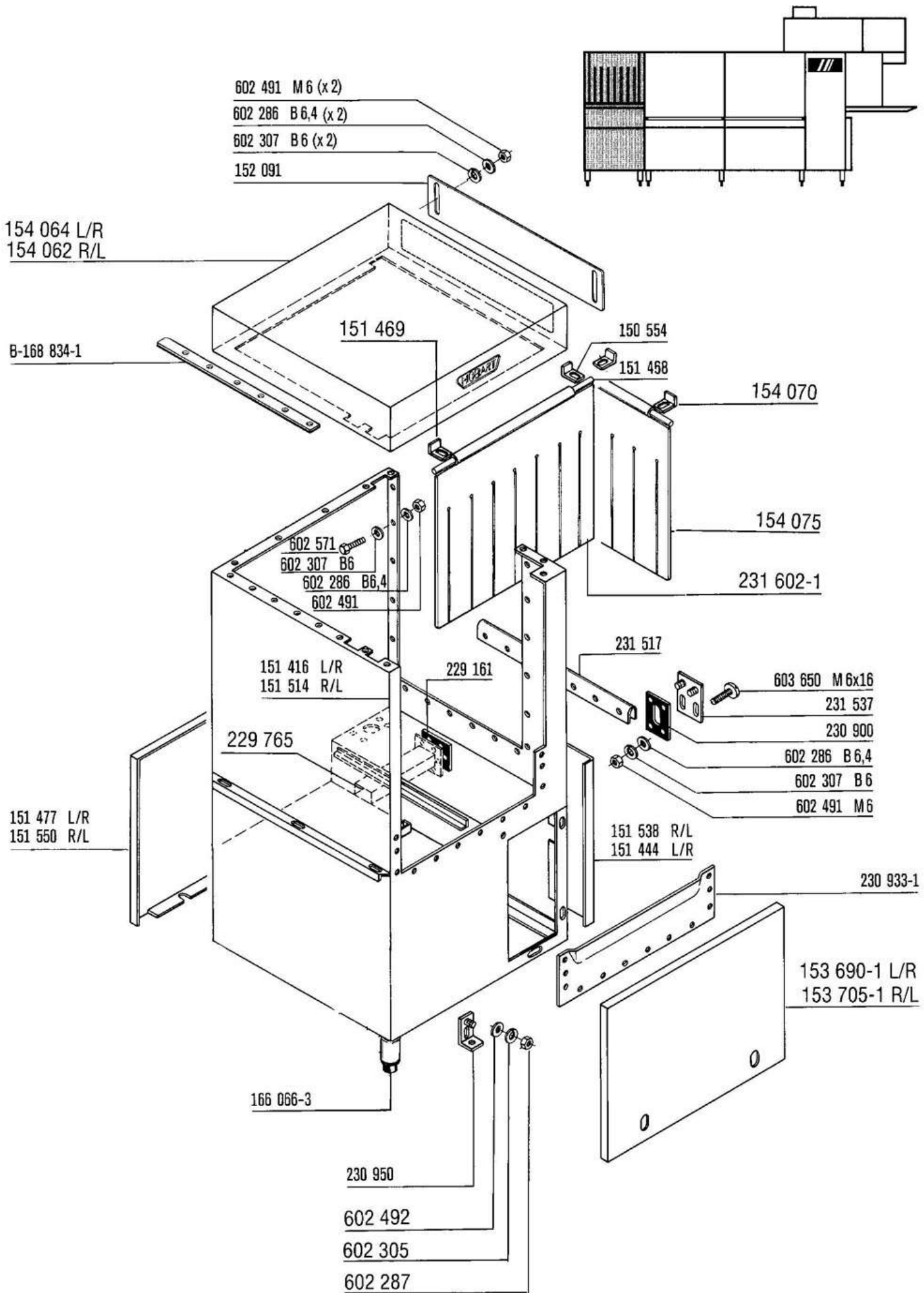


**CX-CA / CX-CB**



see wiring diagram  
voir schéma de cablage  
siehe Schaltplan  
zie elektrisch schema

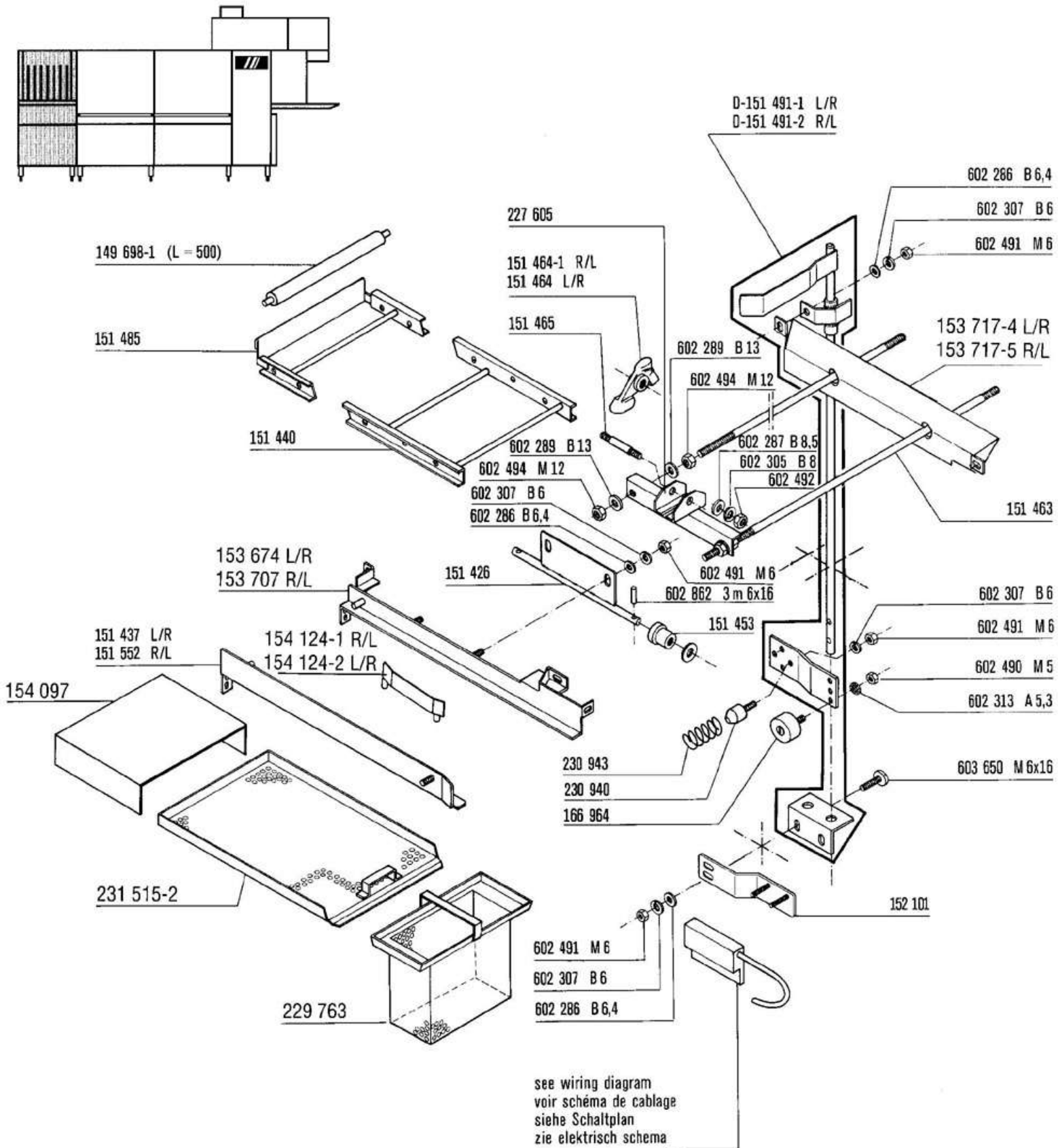


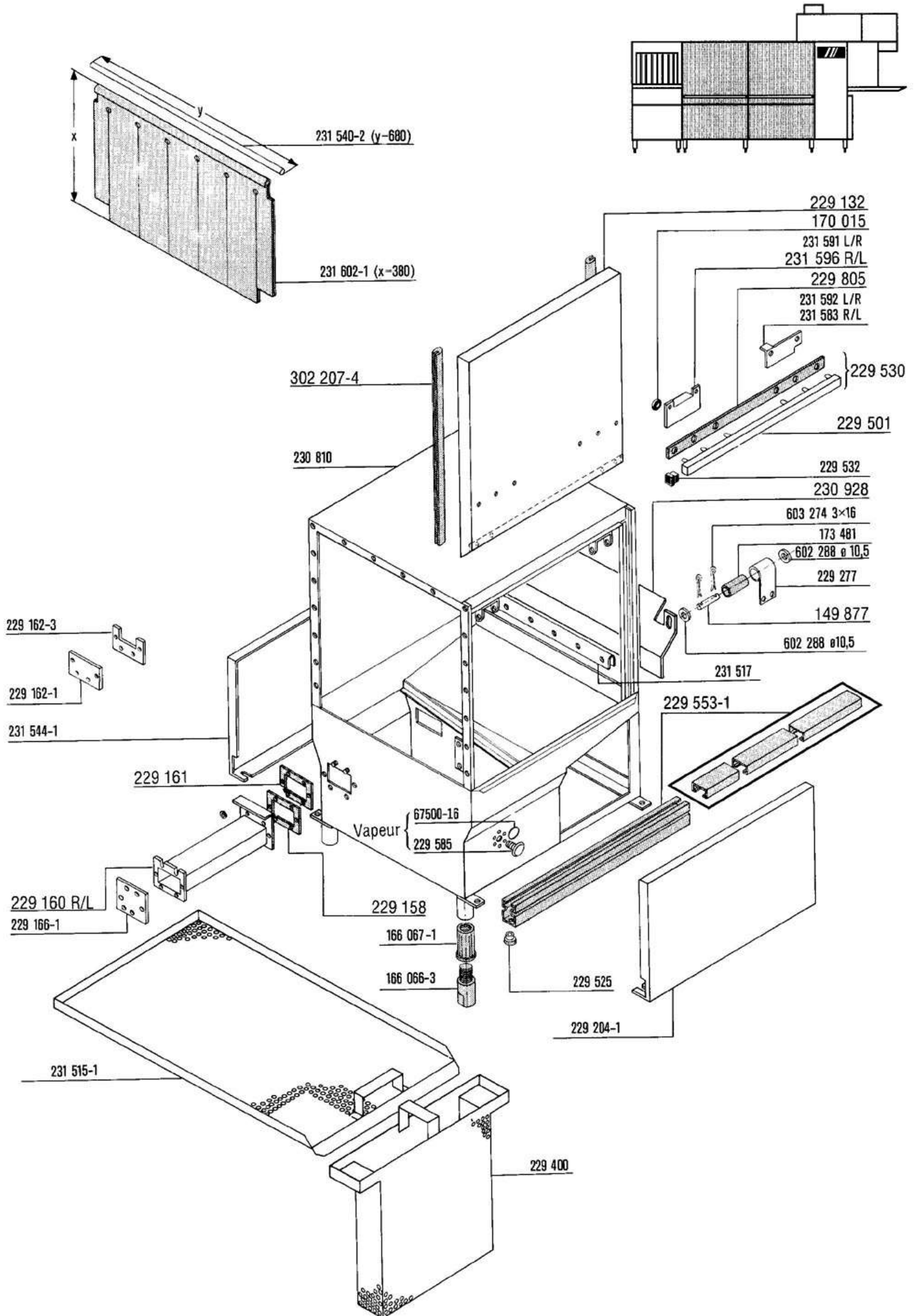


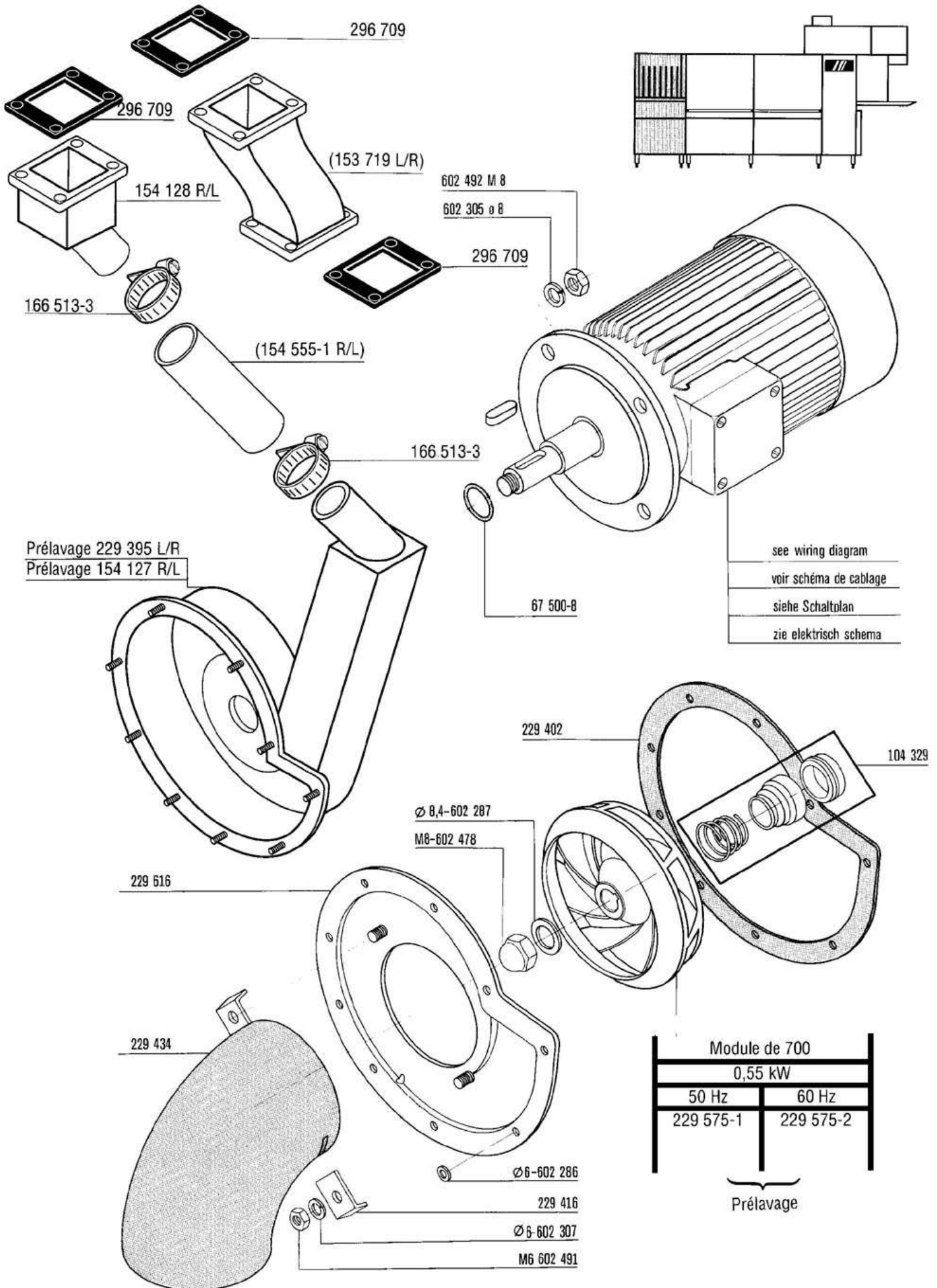


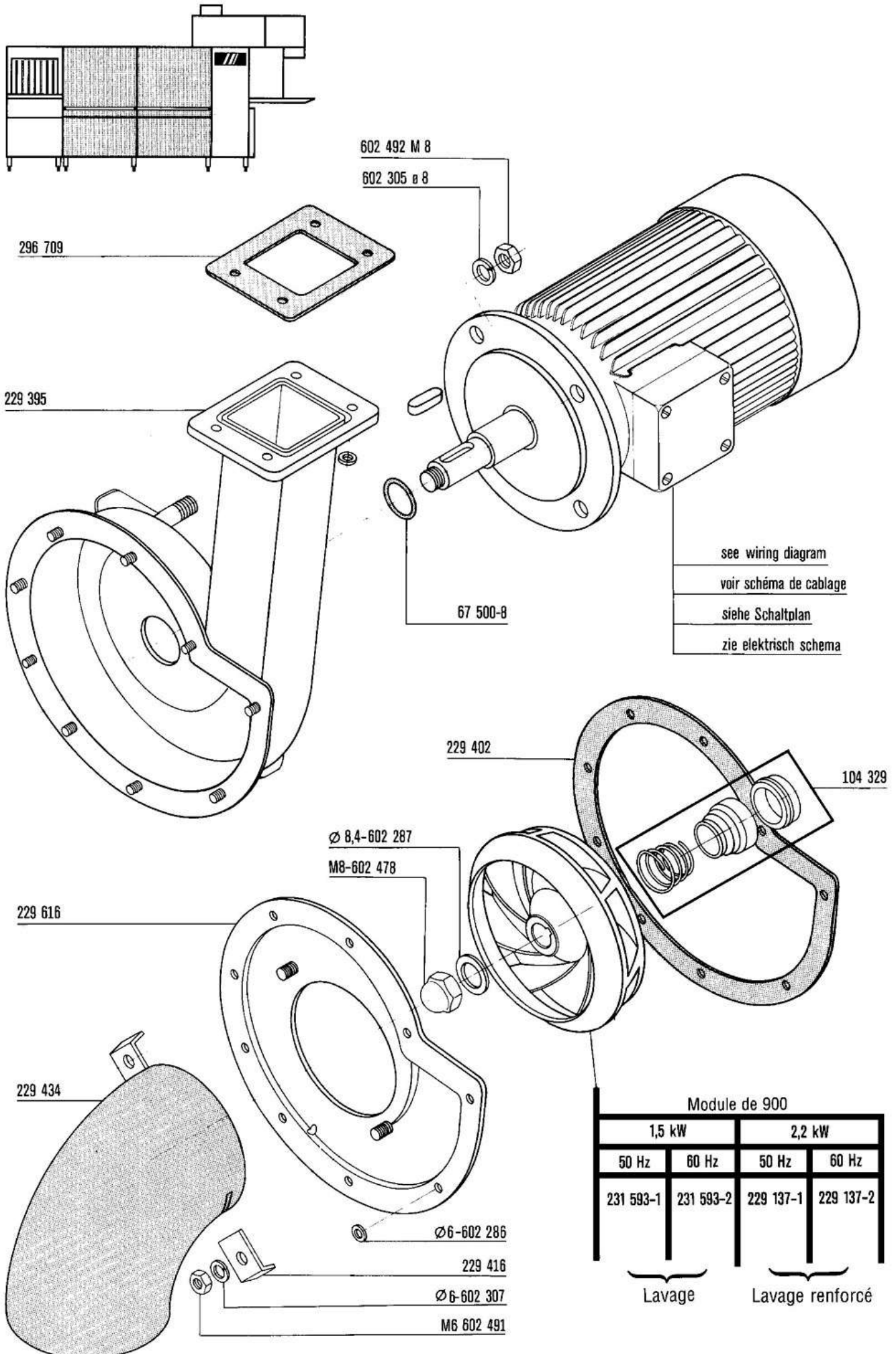
Prewash - drive unit  
Prélavage - système d'avancement  
Vorwaschung Antriebseinheit  
Aandrijving - vorwas

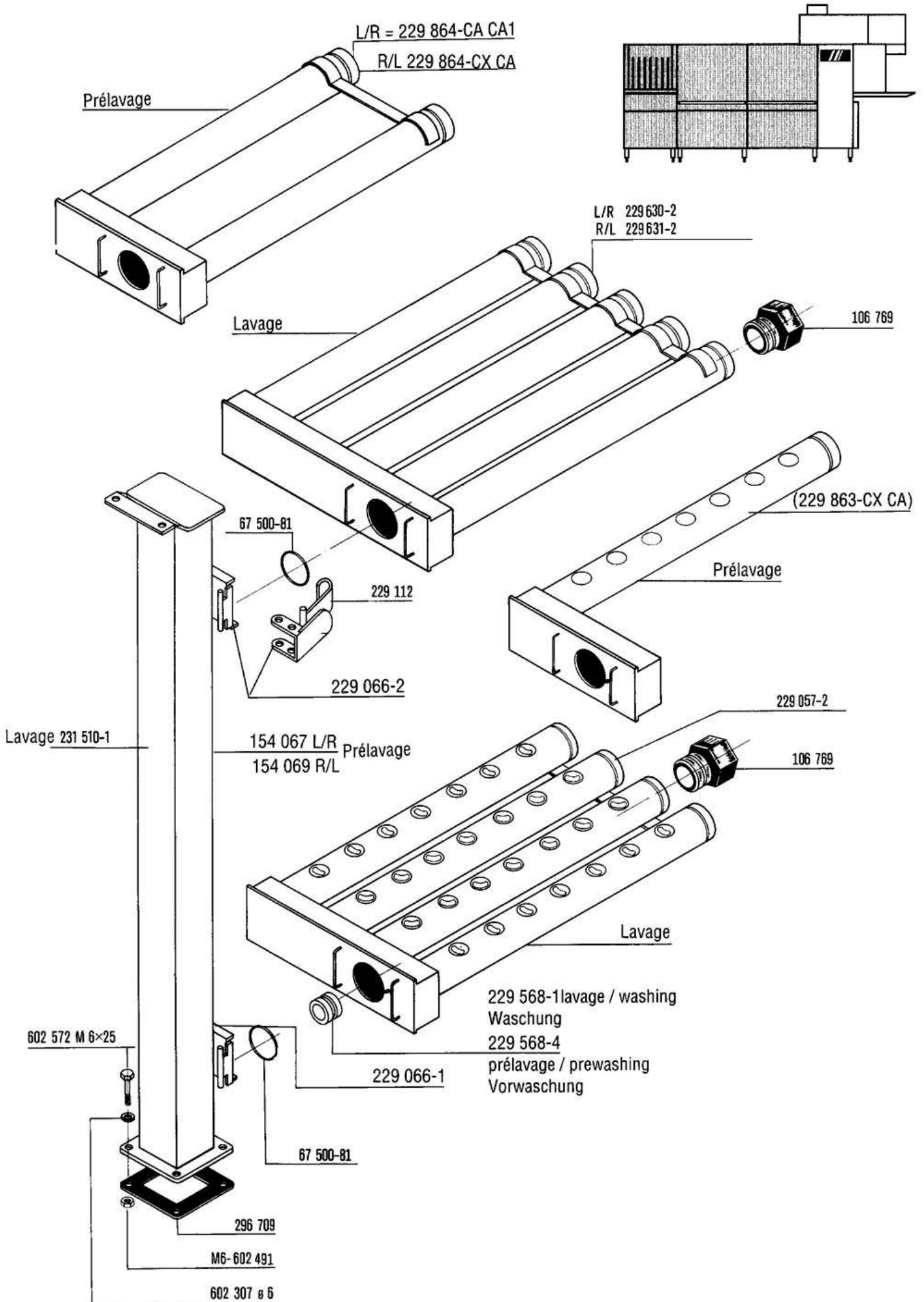
CX-CA  
CX-CB



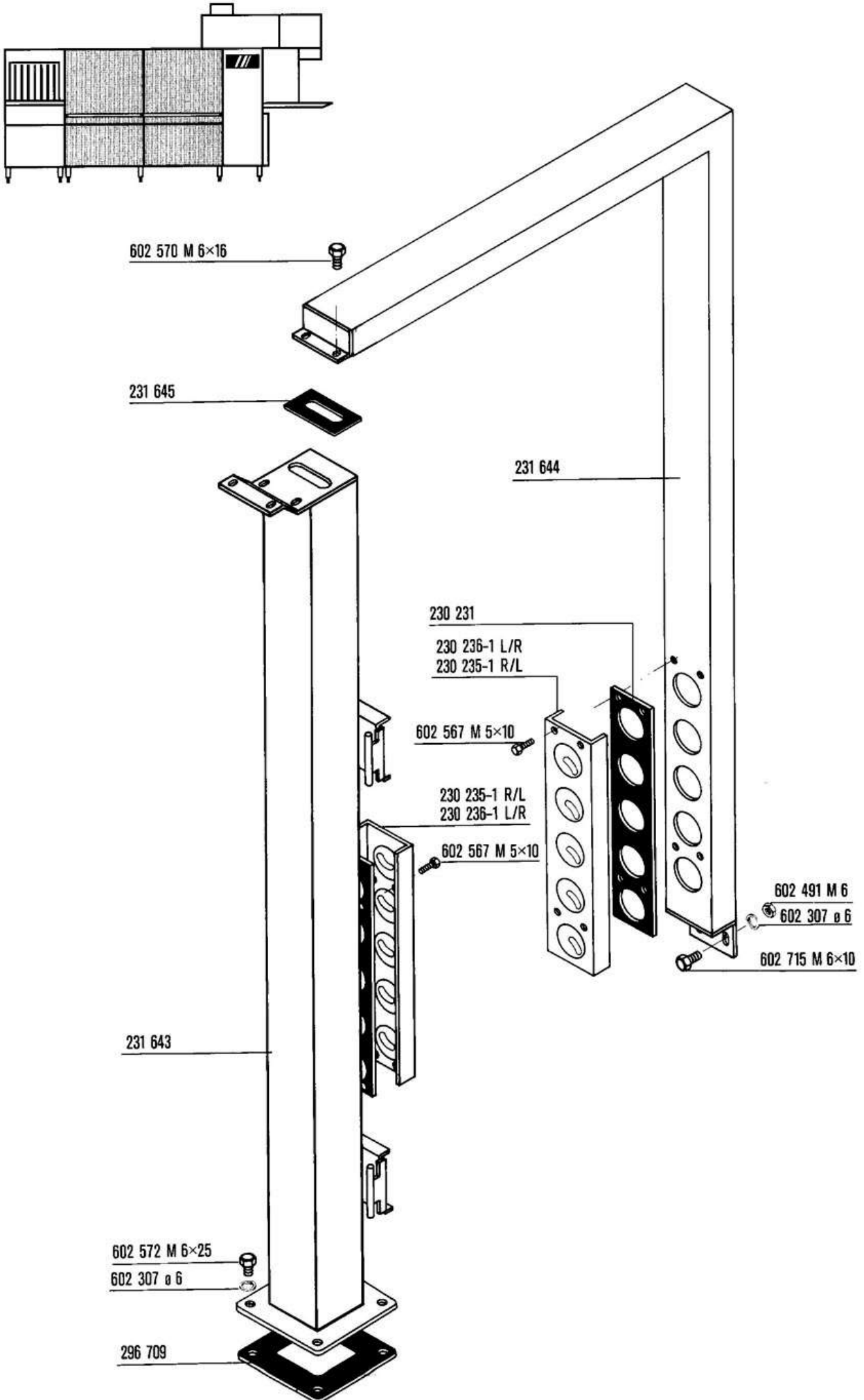


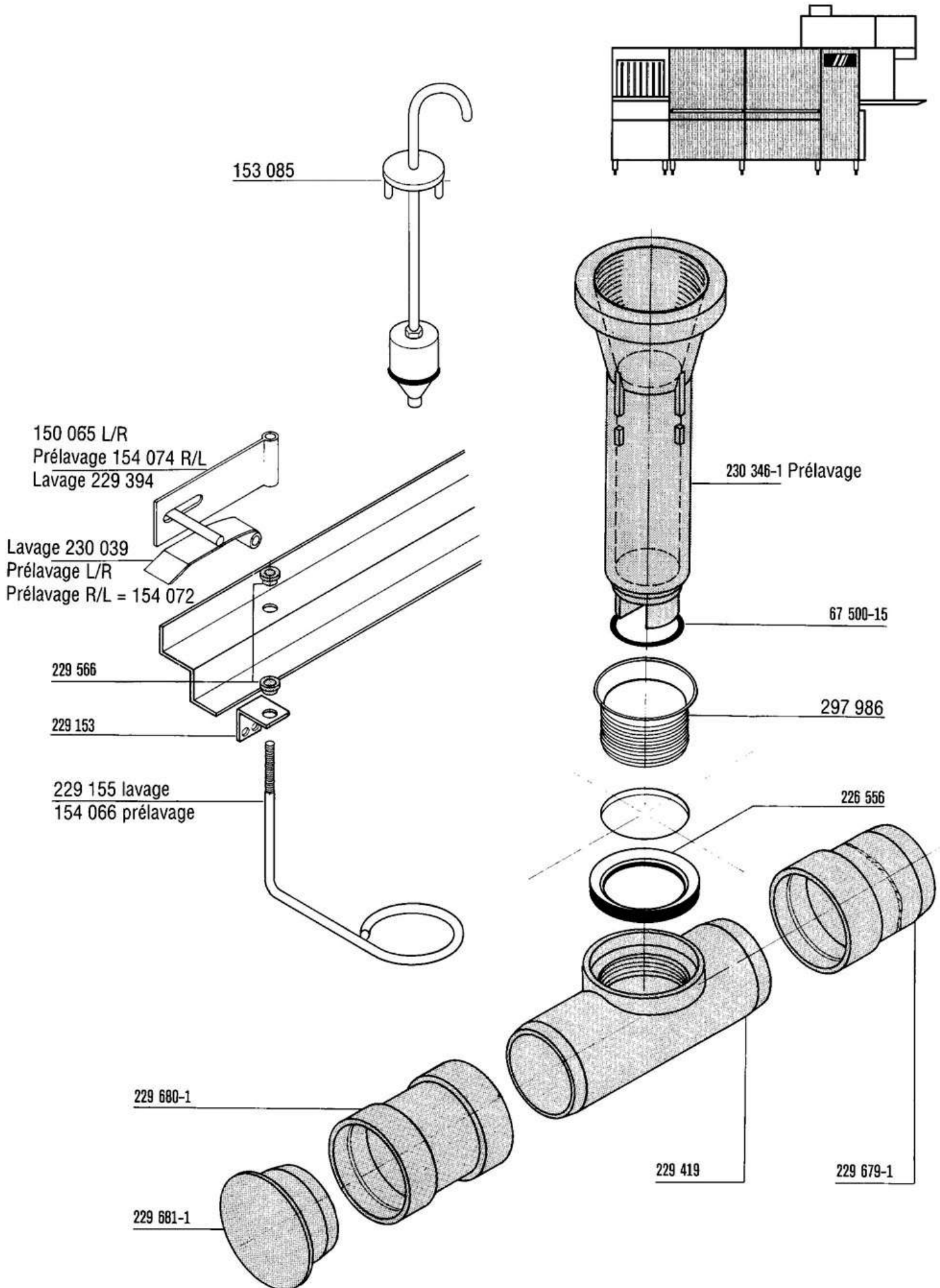










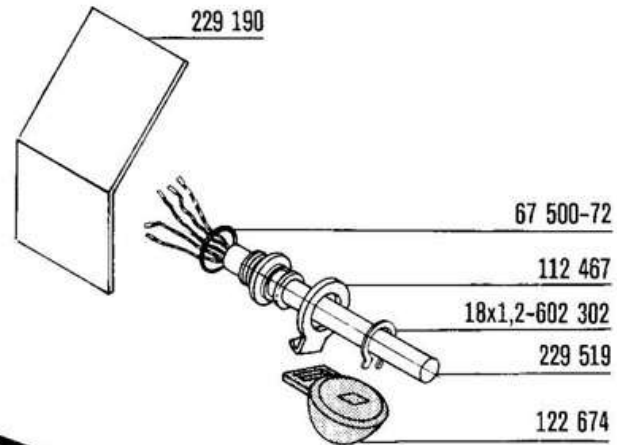
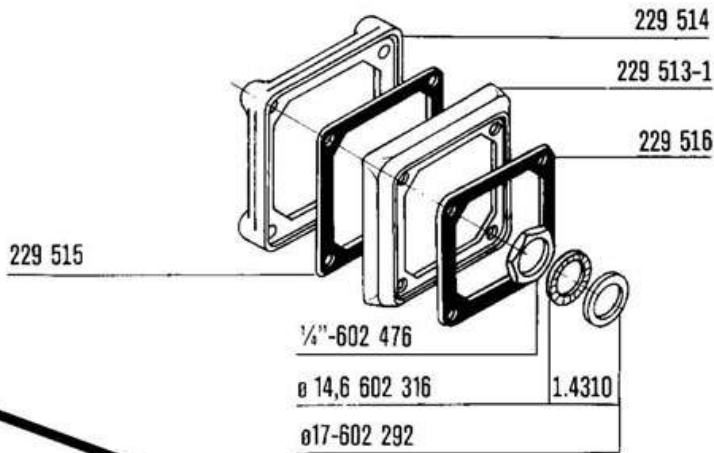
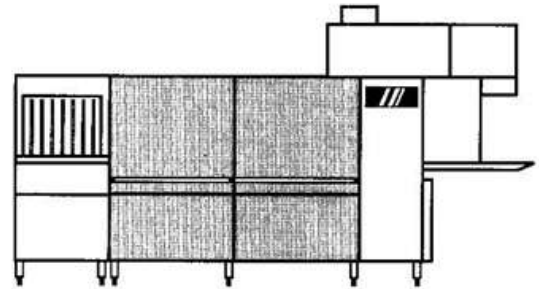




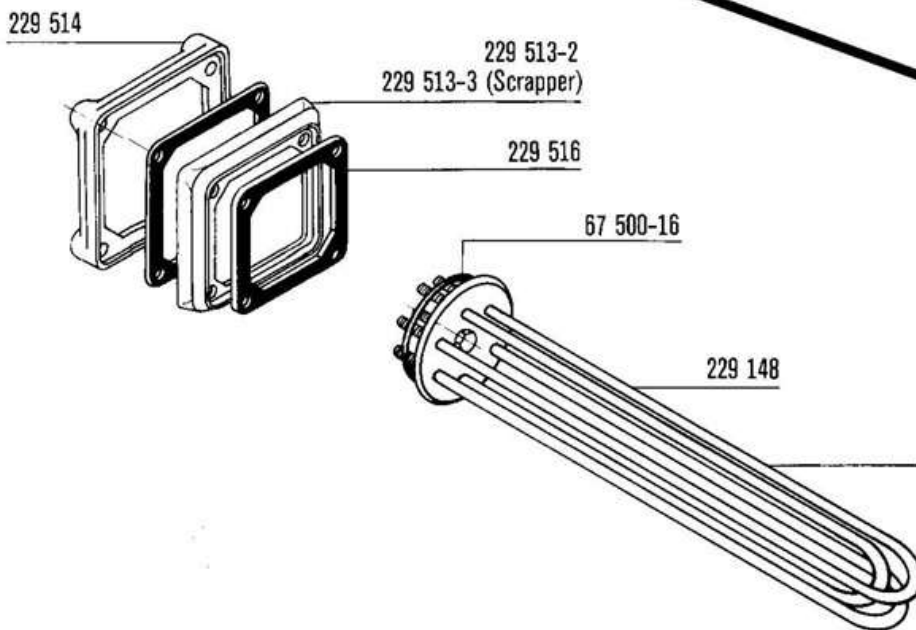
Tank heating & floatswitch  
 Chauffage du bac & interrupteur à flotteur  
 Tankheizung - Schwimmer-Schalter  
 Tankverwarming & niveauschakelaar

CX-CA  
 CX-CB

PRELAVAGE  
 LAVAGE



LAVAGE

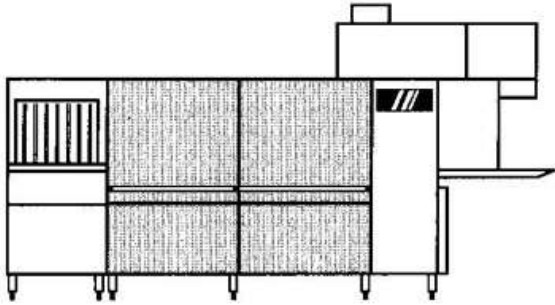


see wiring diagram  
 voir schéma de cablage  
 siehe Schaltplan  
 zie elektrisch schema

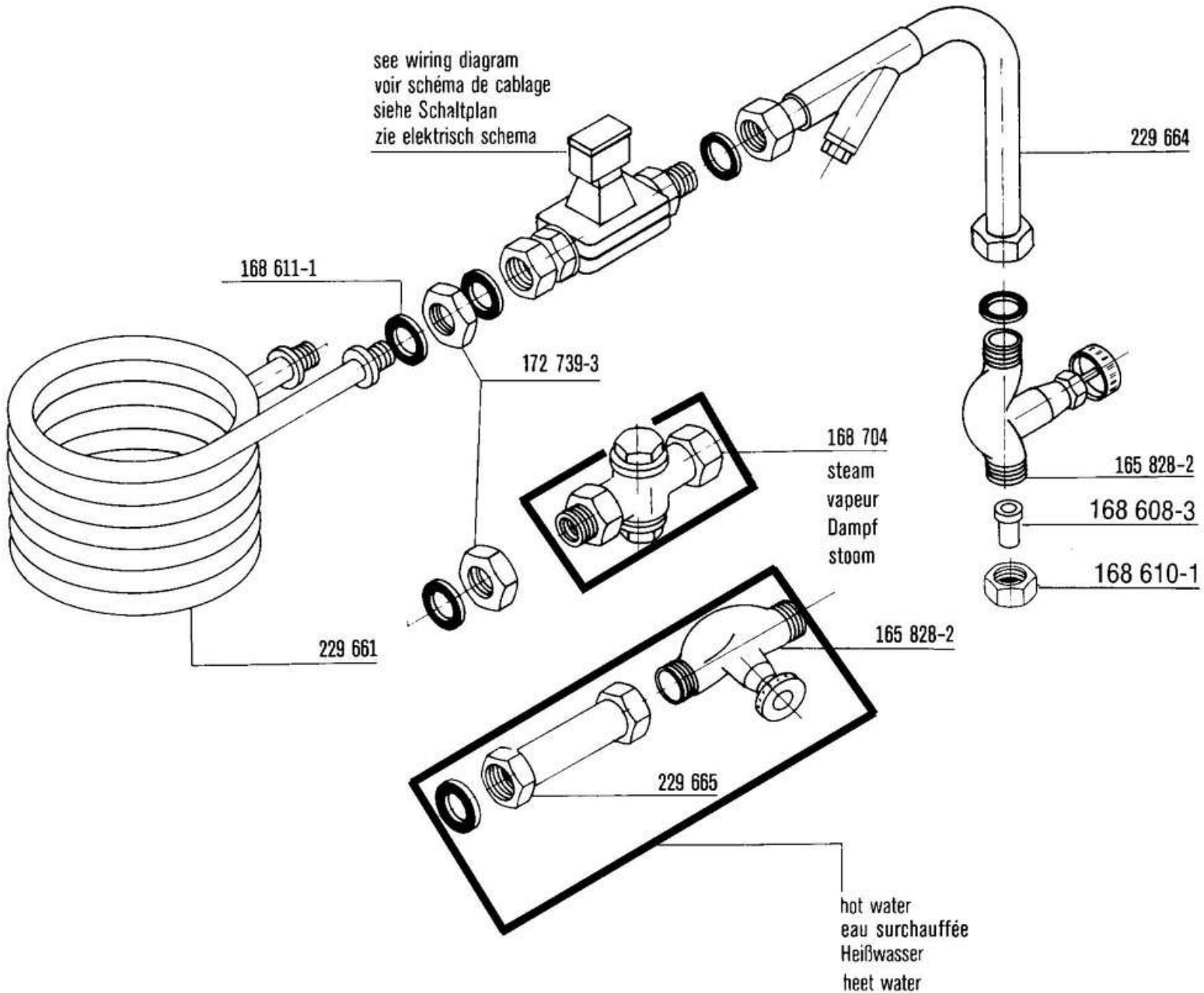


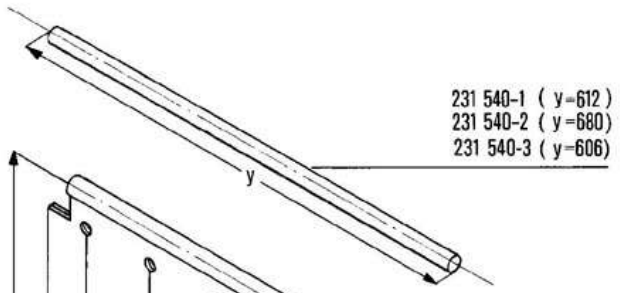
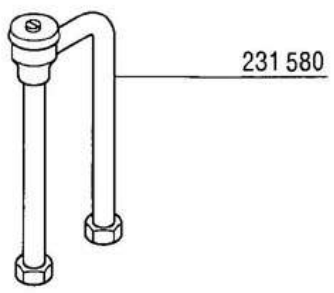
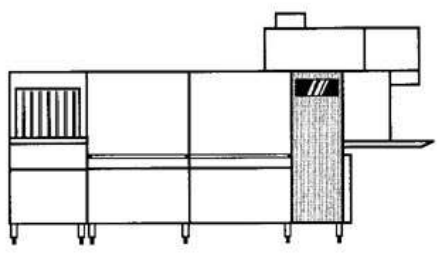
Tank heating - hot water / steam  
Chauffage du bac - eau surchauffée / vapeur  
Tankheizung - Heißwasser / Dampf  
Tankverwarming - heet water / stoom

CX-CA  
CX-CB

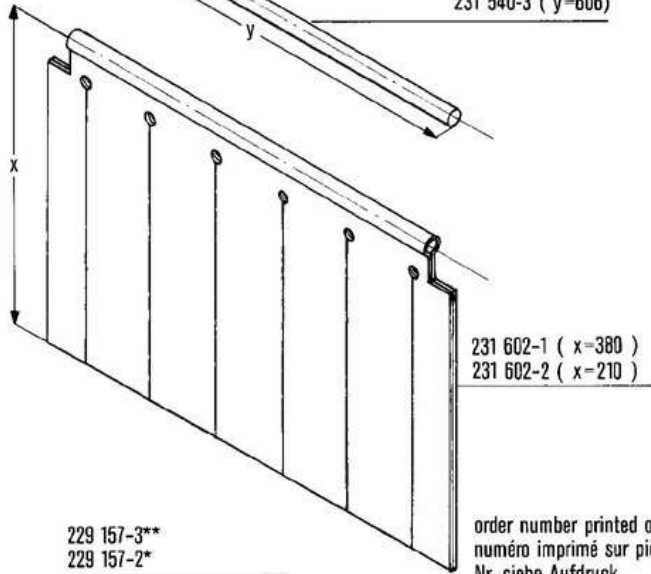


see wiring diagram  
voir schéma de câblage  
siehe Schaltplan  
zie elektrisch schema



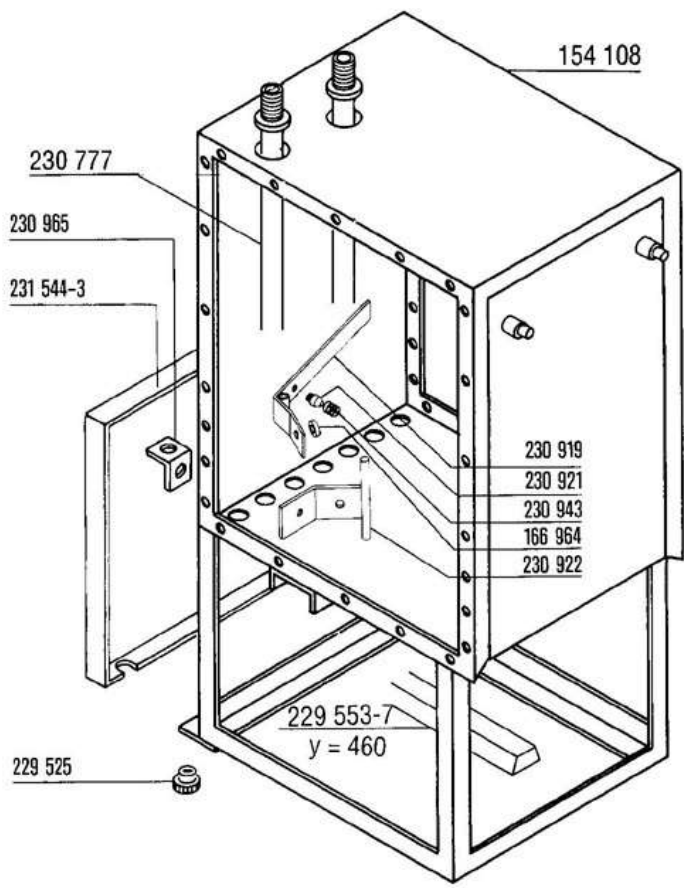


231 540-1 ( y=612 )  
231 540-2 ( y=680 )  
231 540-3 ( y=606 )



231 602-1 ( x=380 )  
231 602-2 ( x=210 )

order number printed on part  
numéro imprimé sur pièce  
Nr. siehe Aufdruck  
nummer afgedrukt



230 777  
230 965  
231 544-3

154 108

229 157-3\*\*  
229 157-2\*  
229 167-1 (220-260 V )  
229 048

sans condenseur  
154 144

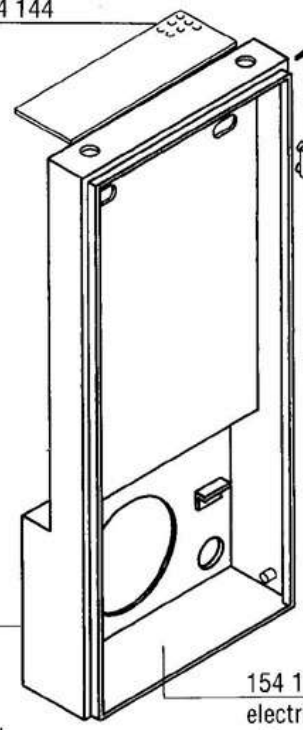
229 169 (4 m)

230 733

230 919  
230 921  
230 943  
166 964  
230 922

229 553-7  
y = 460

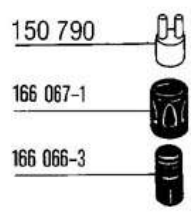
229 525



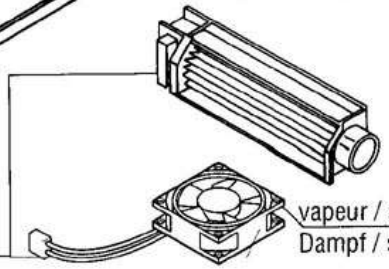
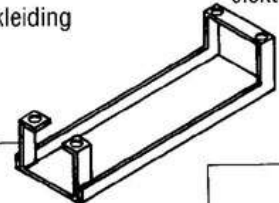
230 988  
vapeur / steam  
Dampf / stoom  
+  
panneau / panel  
Verkleidung / bekleding  
231 601

154 104  
electrique / electric  
elektrisch

229 518-2  
152 527 (électrique)  
152 528 (vapeur)



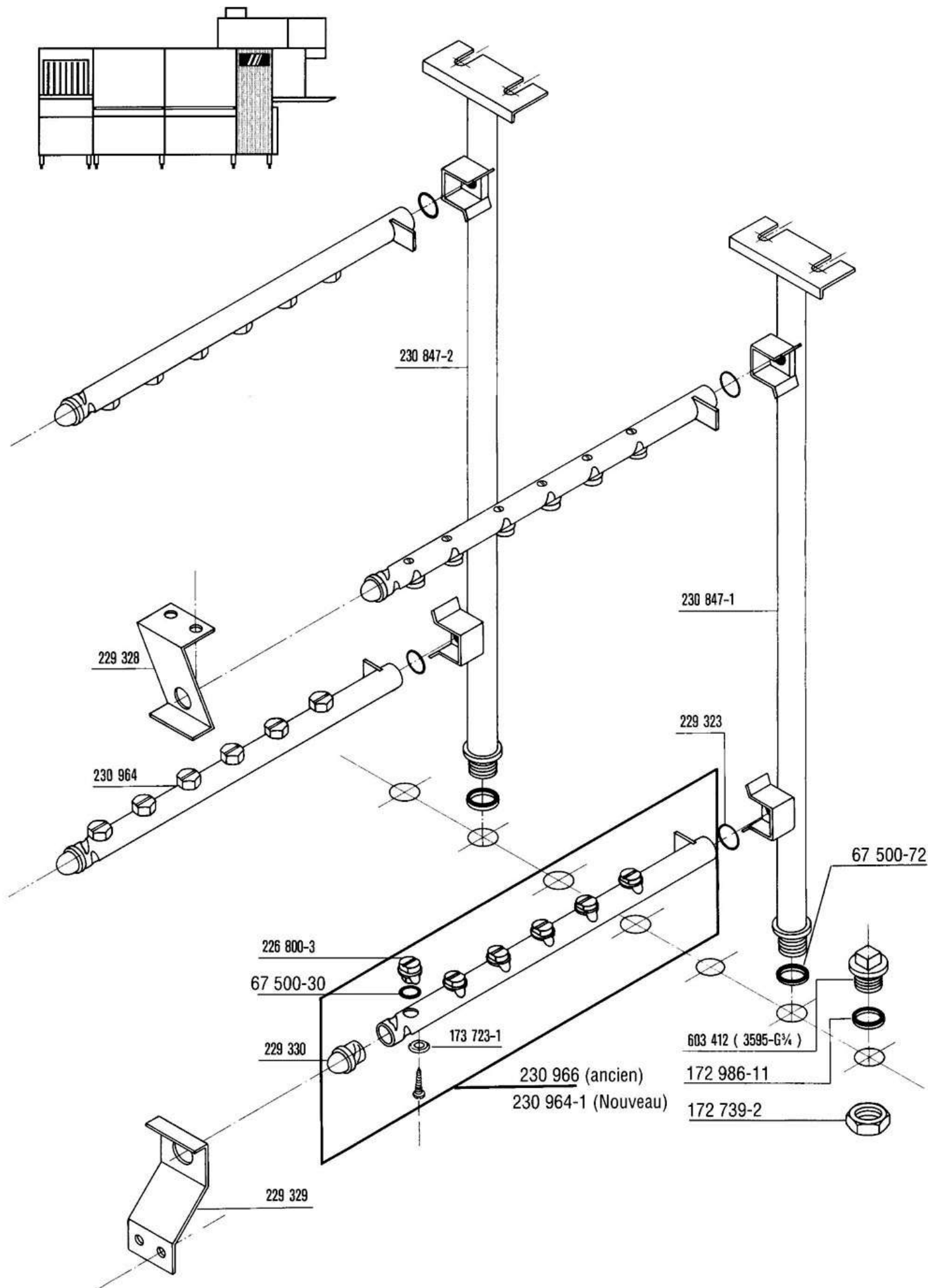
230 926

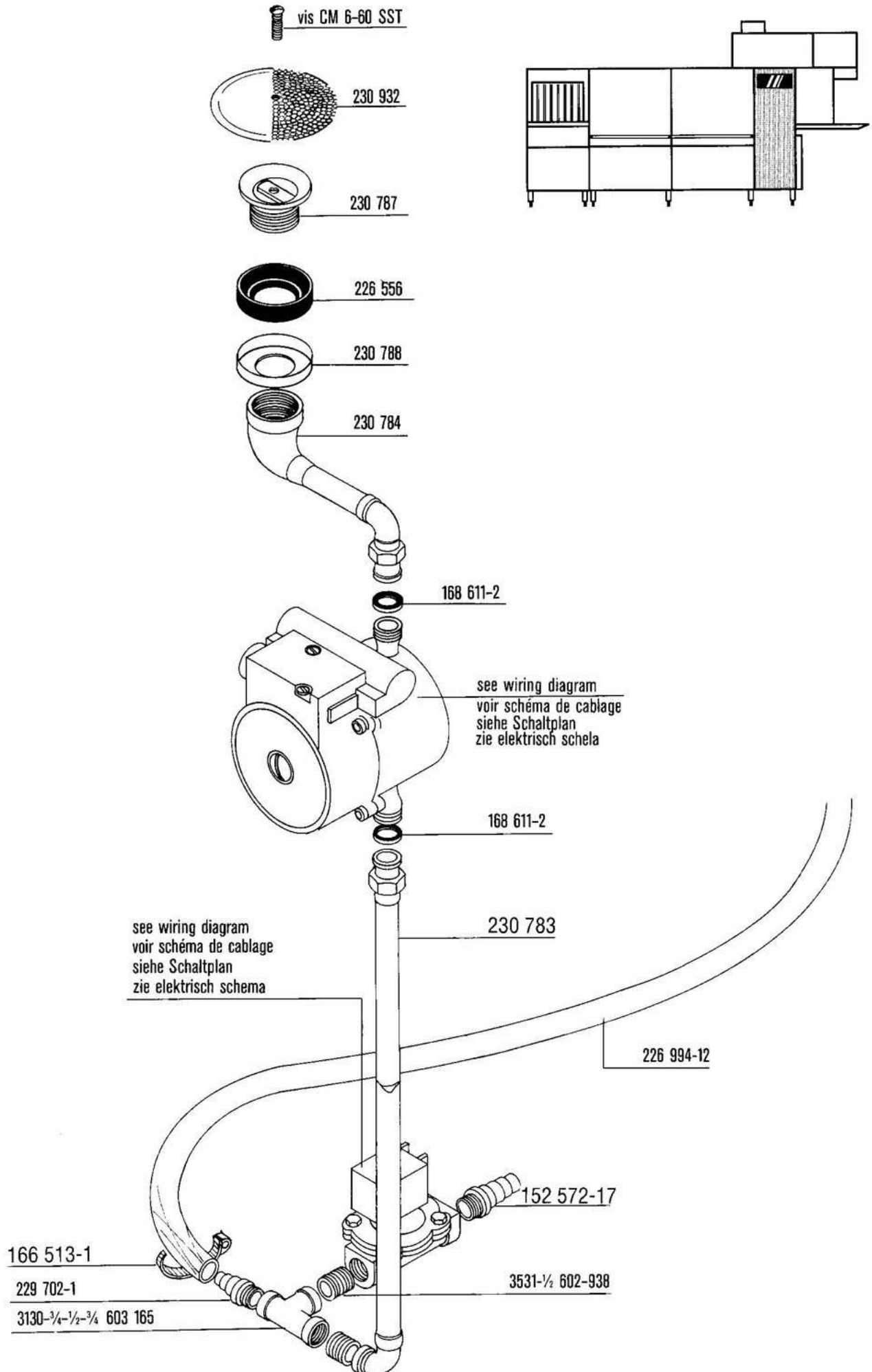


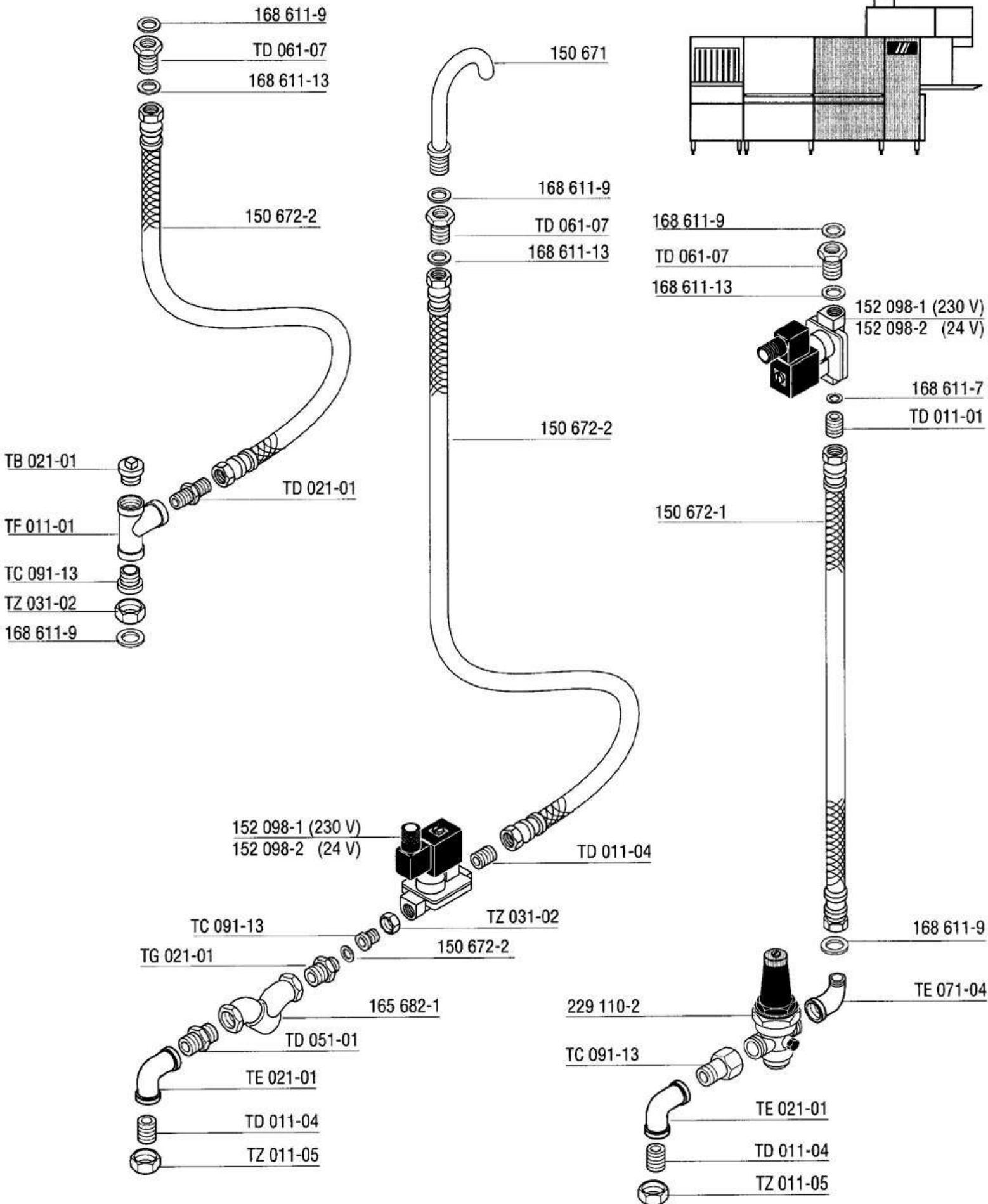
vapeur / steam  
Dampf / stoom

see wiring diagramm  
voir schéma de cablage  
siehe Schaltplan  
zie elektrisch schema

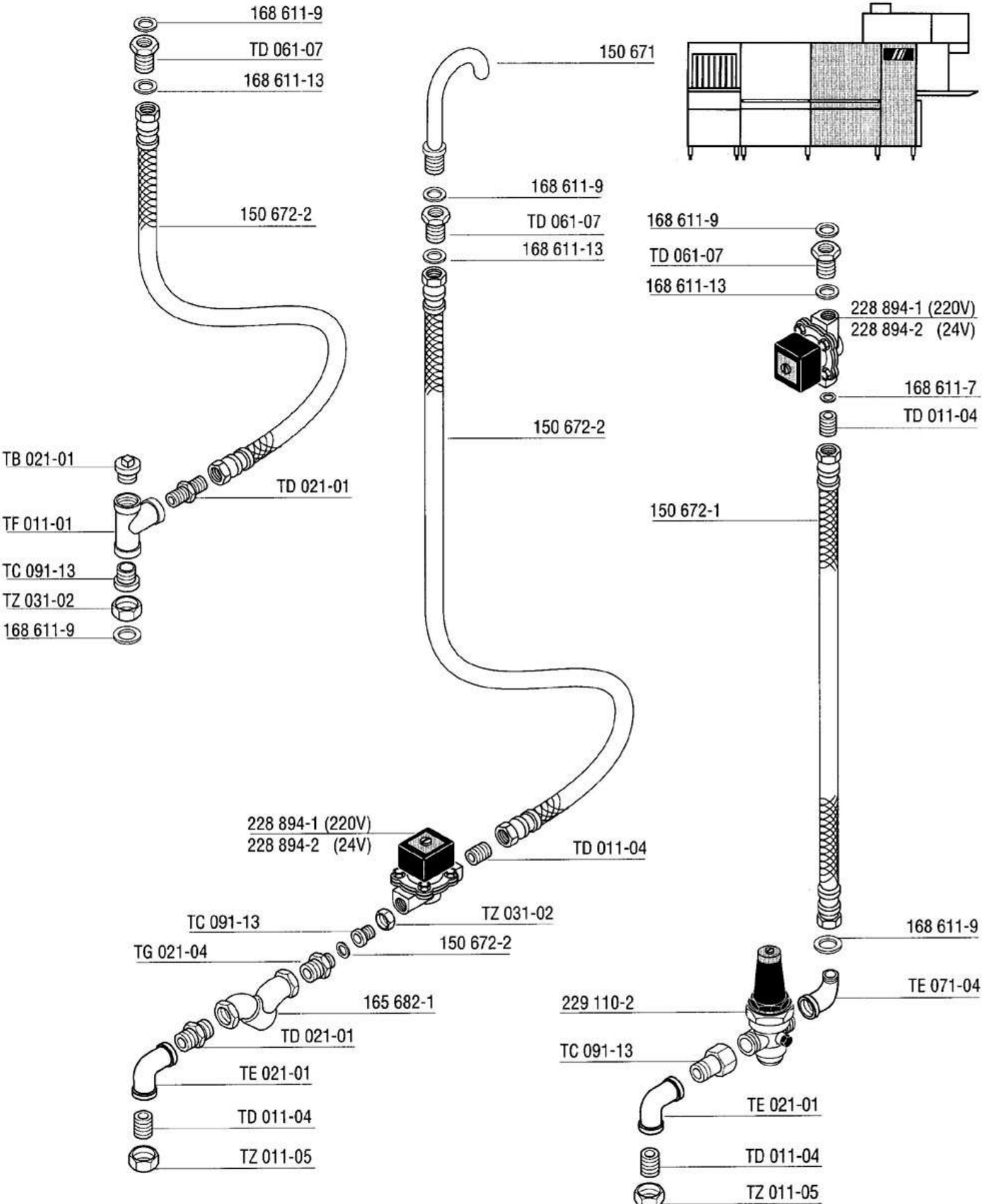
\*\* yellow, jaune, gelb, geel  
\* green, vert, grün, groen

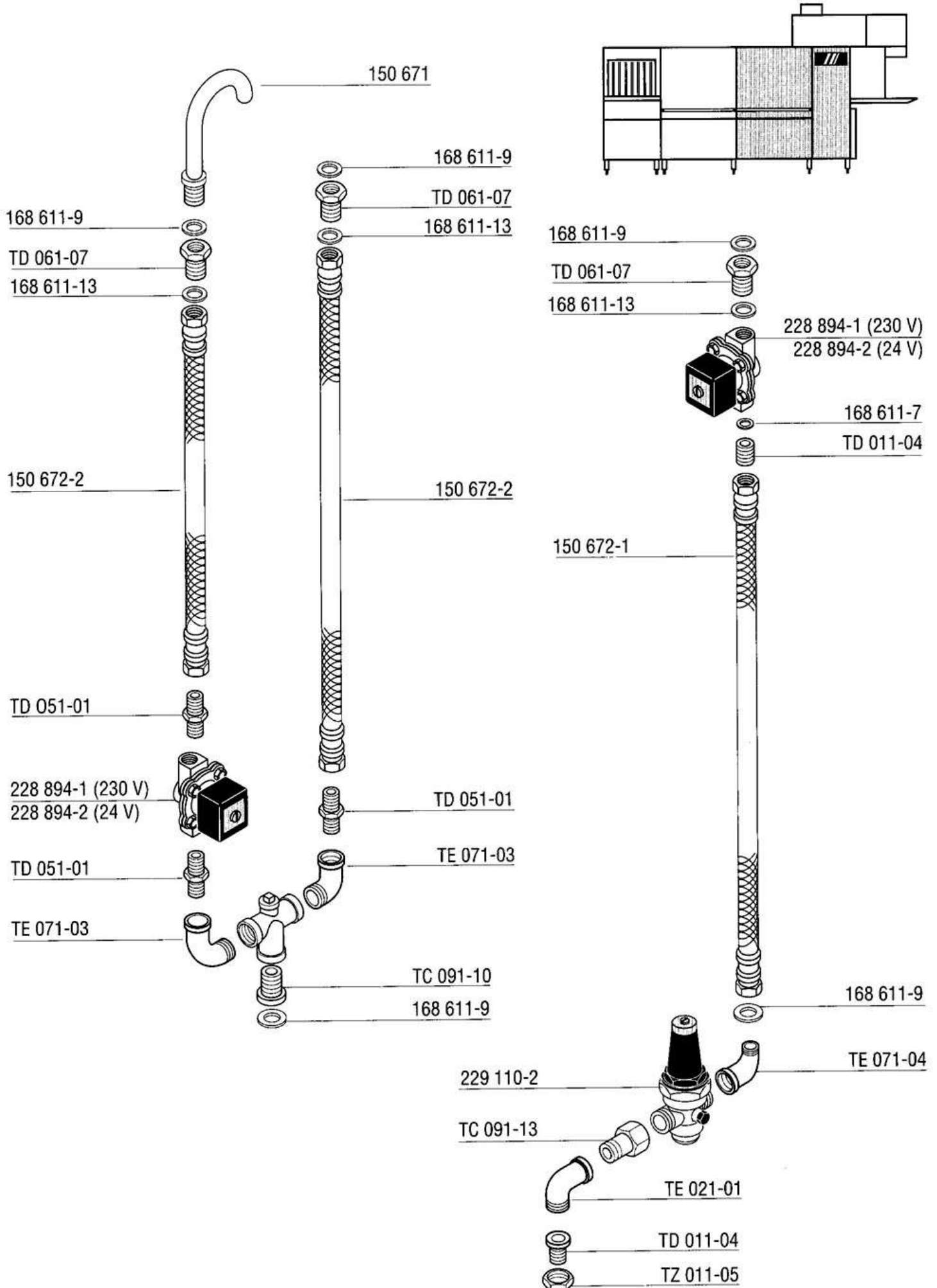


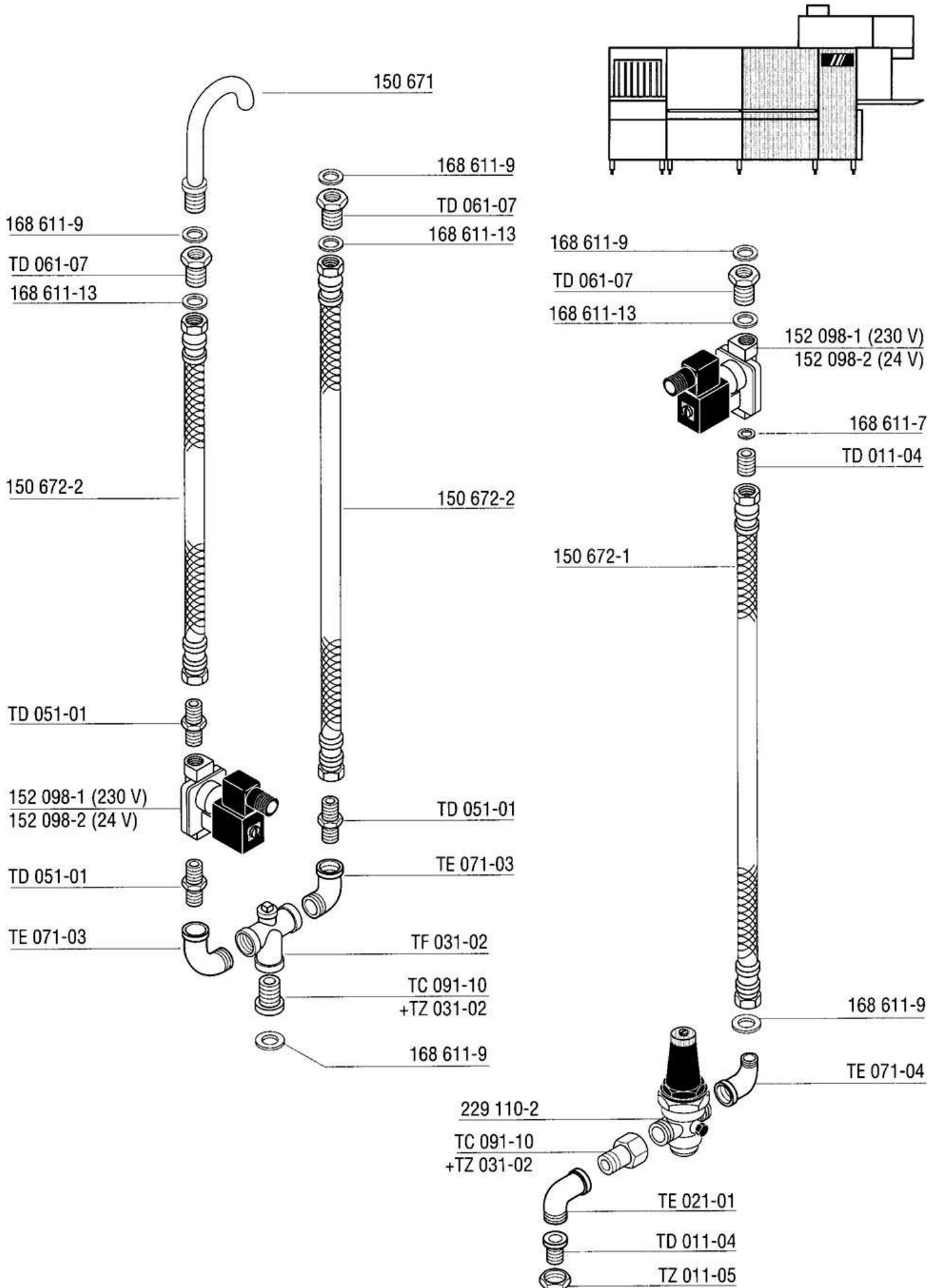


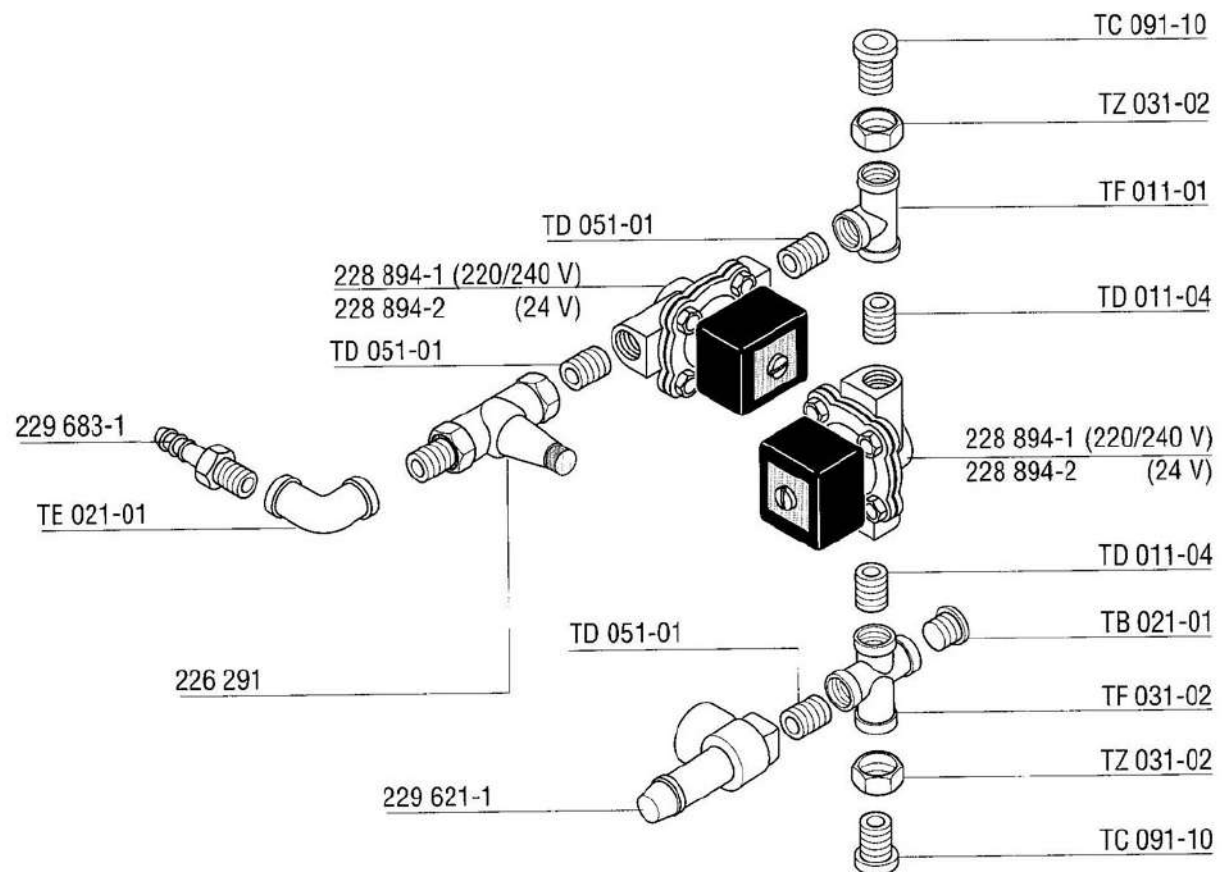
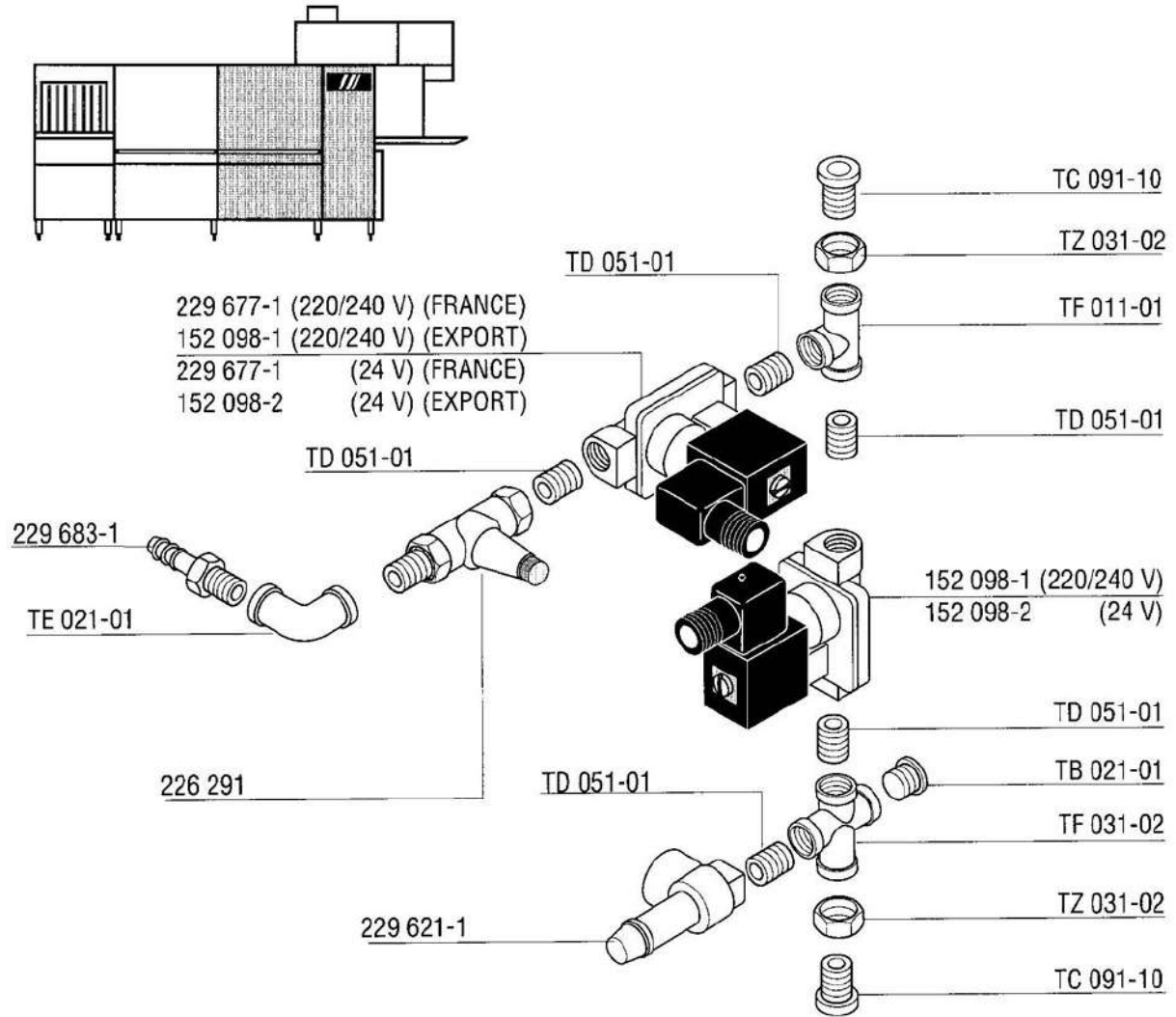




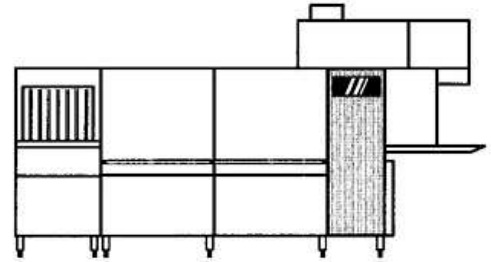
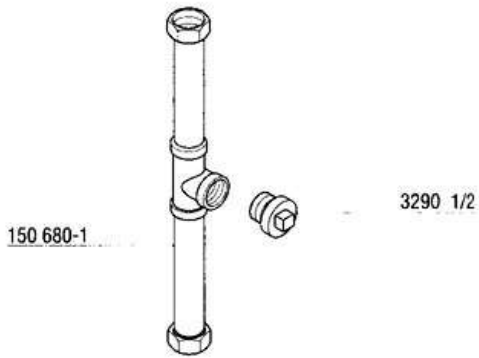




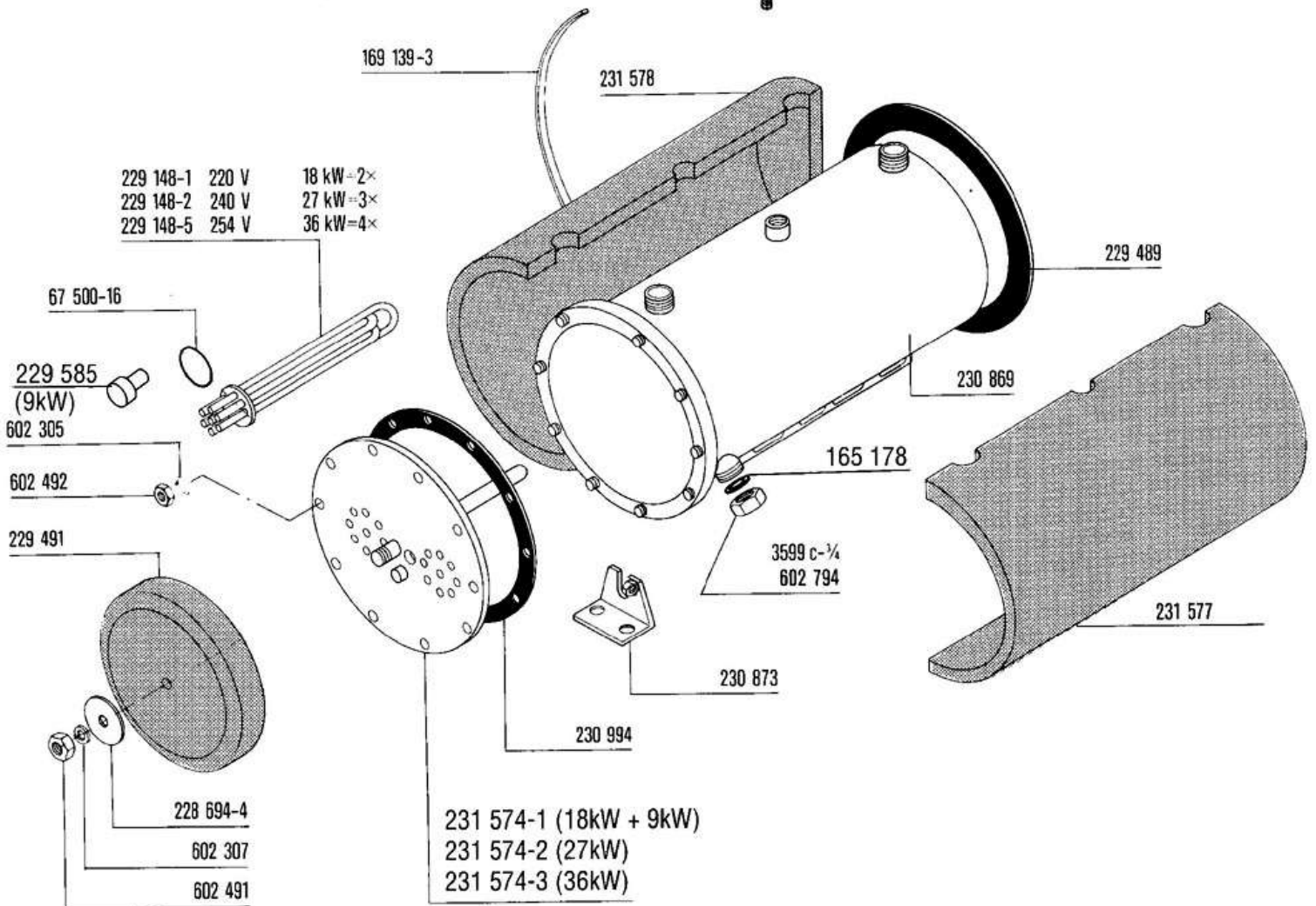
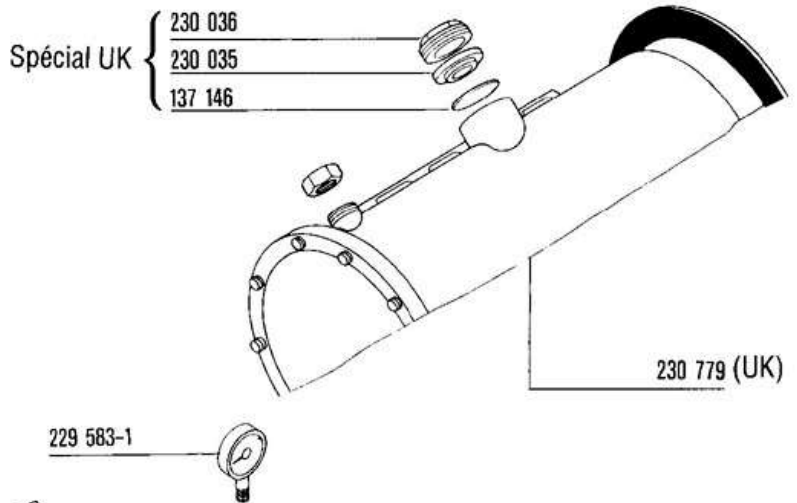
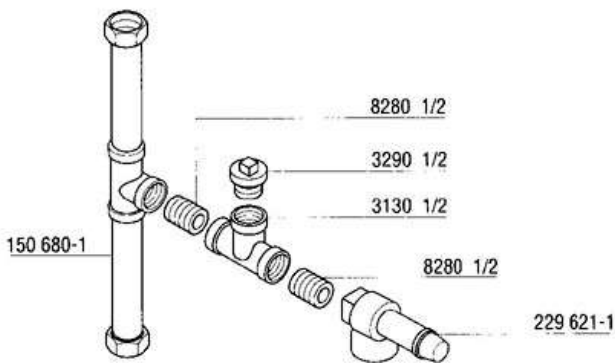


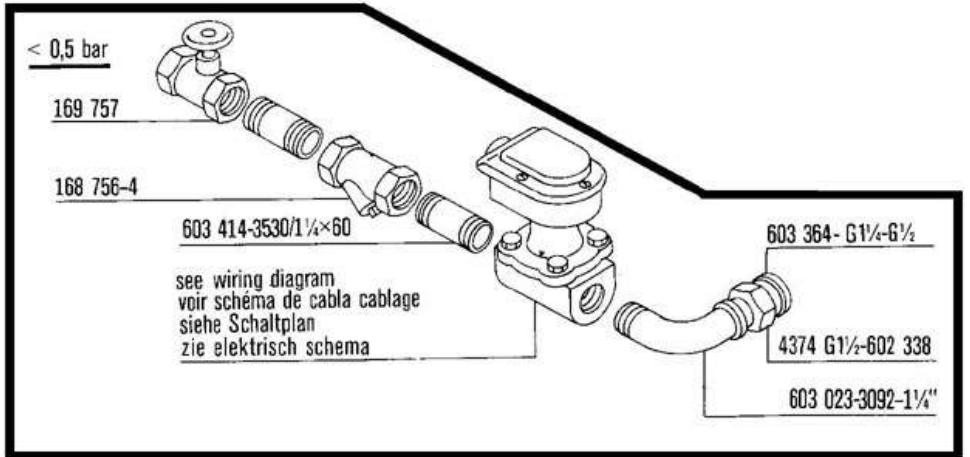
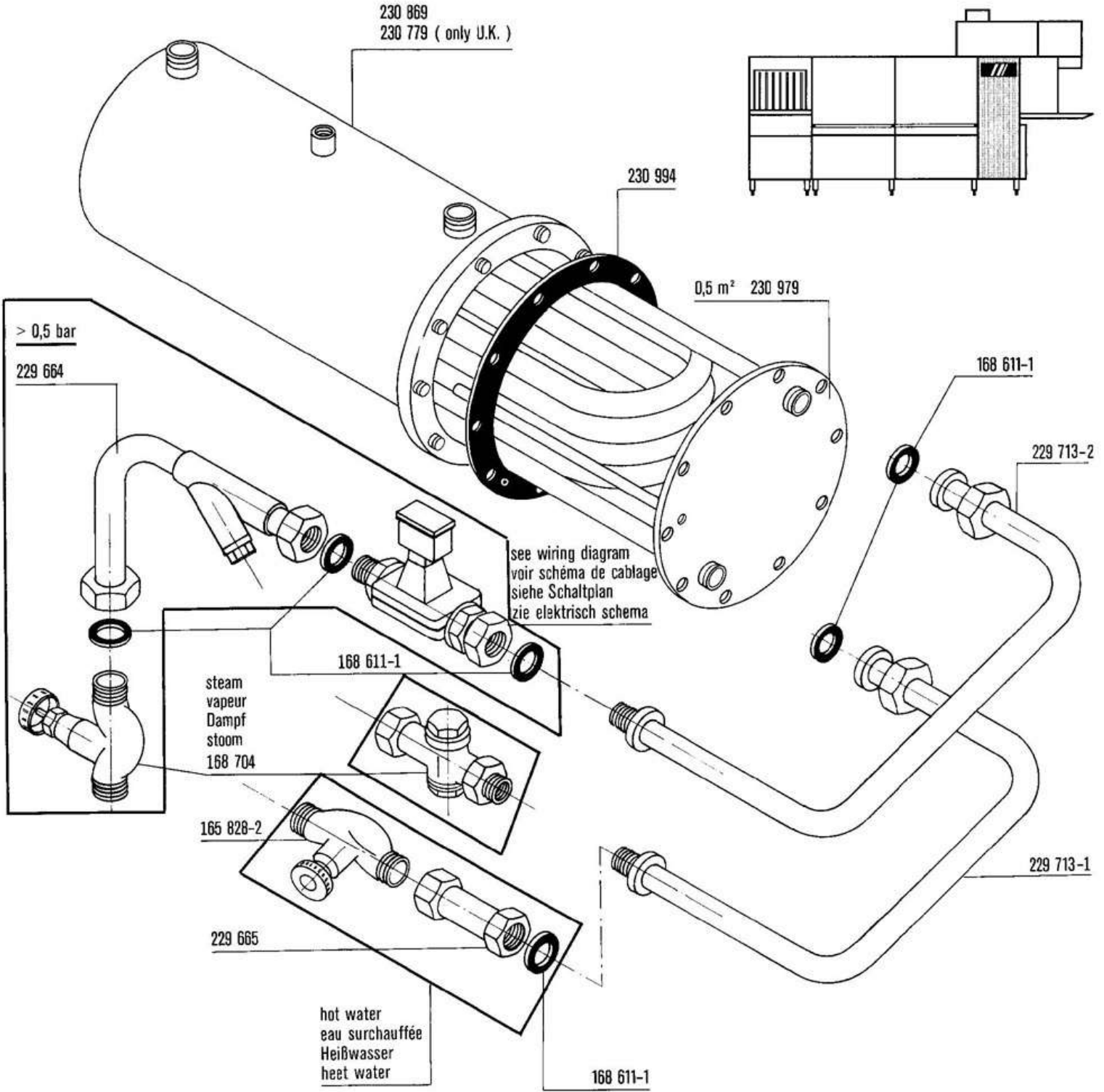


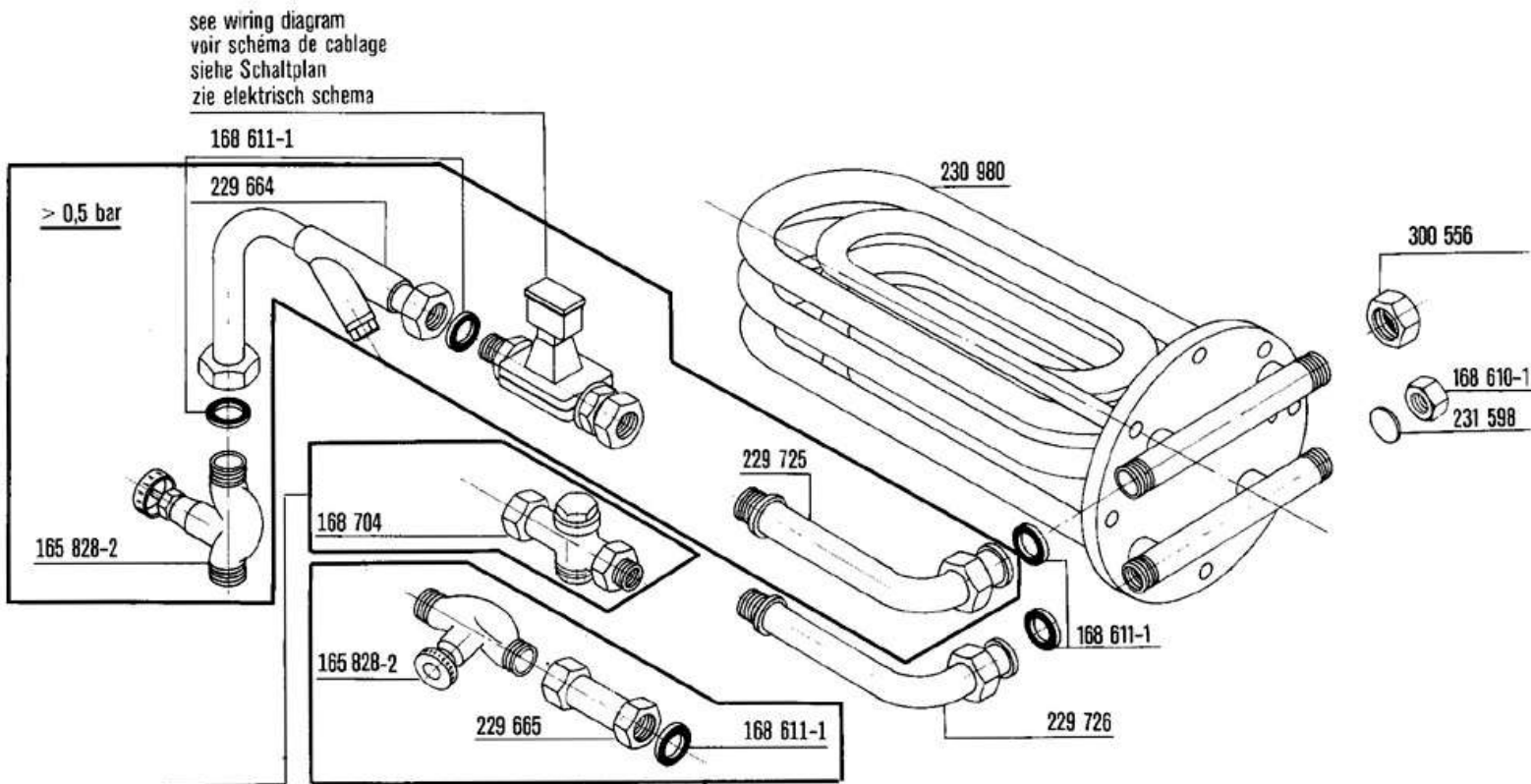
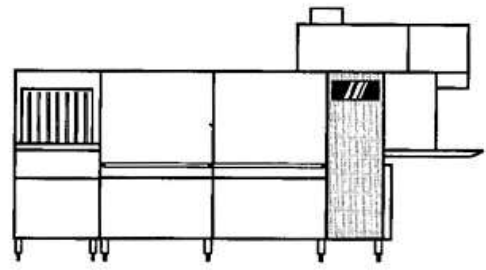
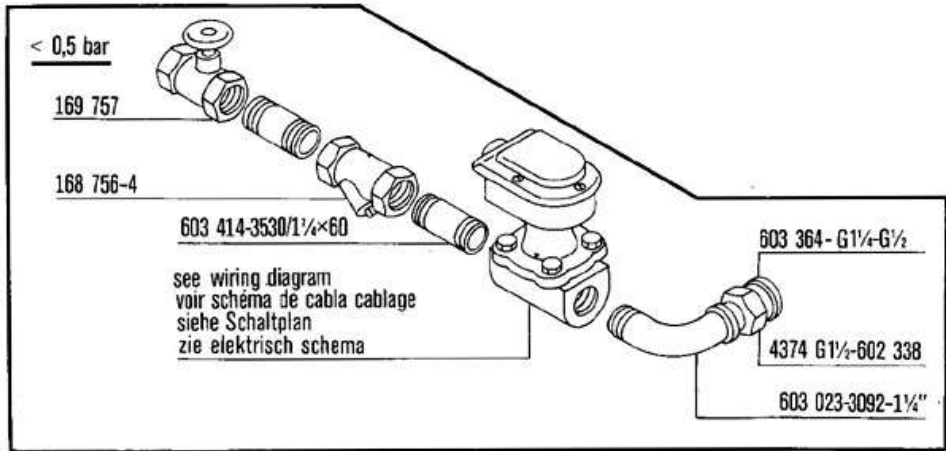
BOOSTER OUTLET F / G / EXPORT



BOOSTER OUTLET UK

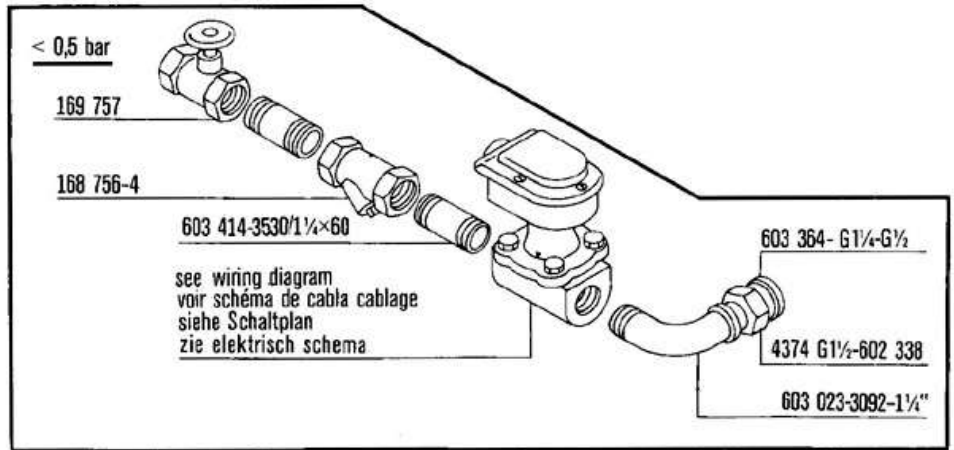






steam  
 vapeur  
 Dampf  
 stoom

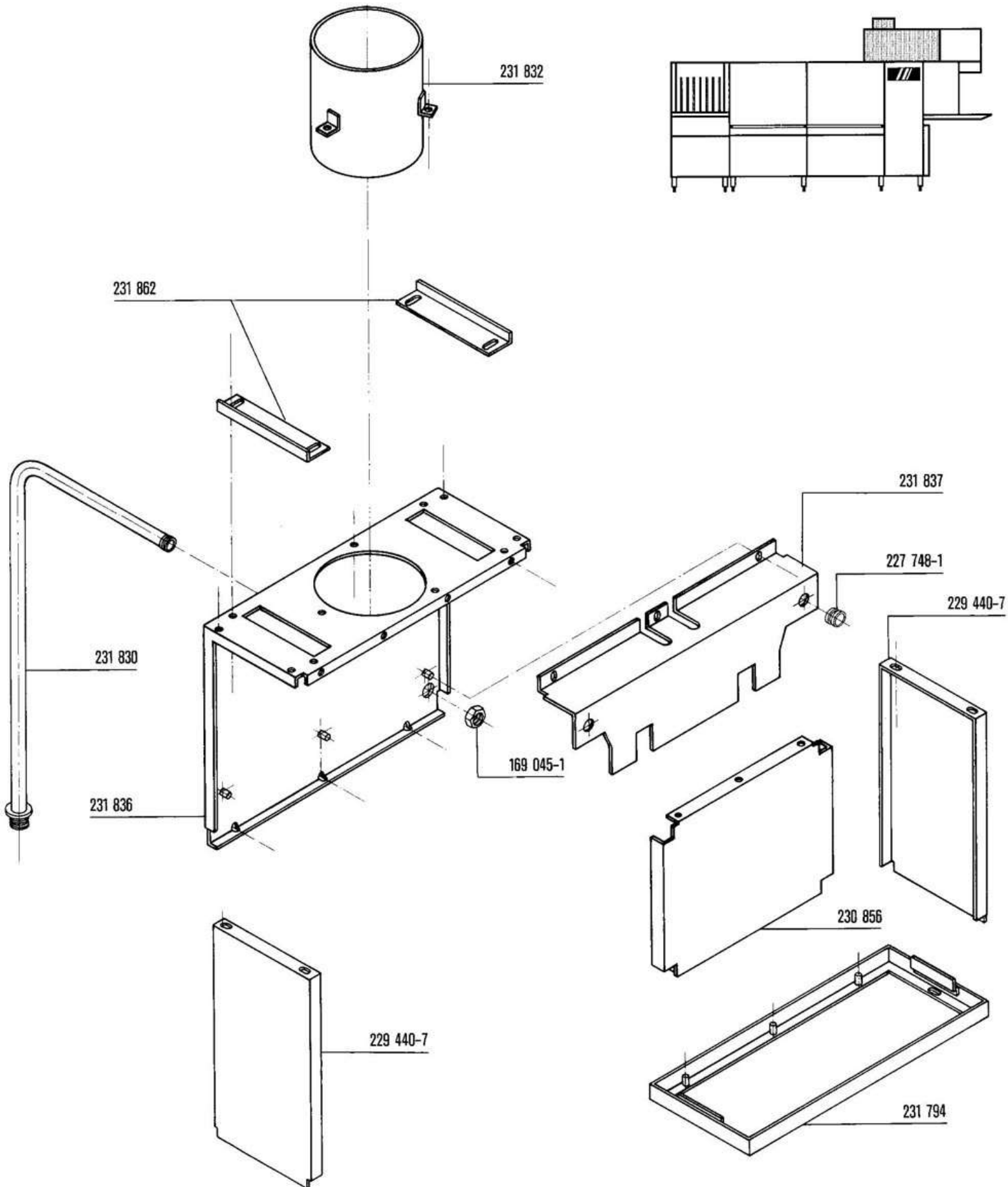
hot water  
 eau surchauffée  
 Heißwasser  
 heet water



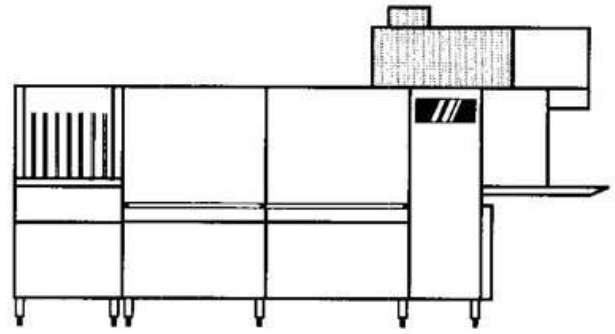


Vent hood  
Capot d'extraction  
Absaughaube  
Wasem afzuiging - kap

CX-CA  
CX-CB







602 660 - M6x16

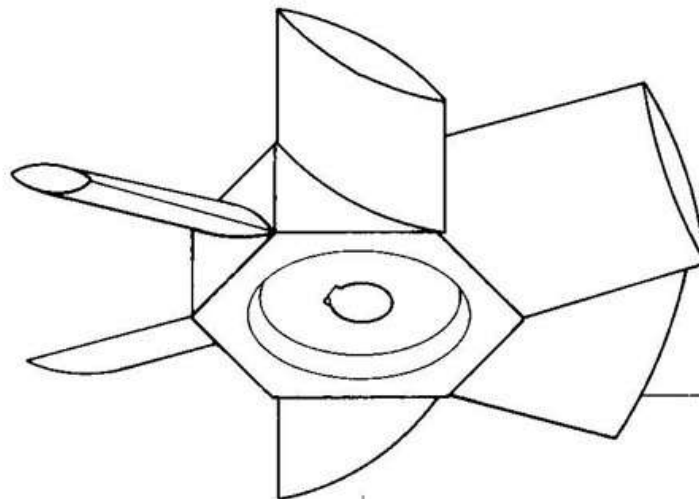
602 286  $\varnothing 6,4$

38 934-1 ( x=62mm )

38 934-2 ( x=94mm )

see wiring diagram  
 voir schéma de cablage  
 siehe Schaltplan  
 zie elektrisch schema

5x5x25



38933-9 (50Hz) 236 mm  $\varnothing$   
 38933-2 (60Hz)  
 38933-10 (50Hz) 296 mm  $\varnothing$   
 38933-11 (60Hz)

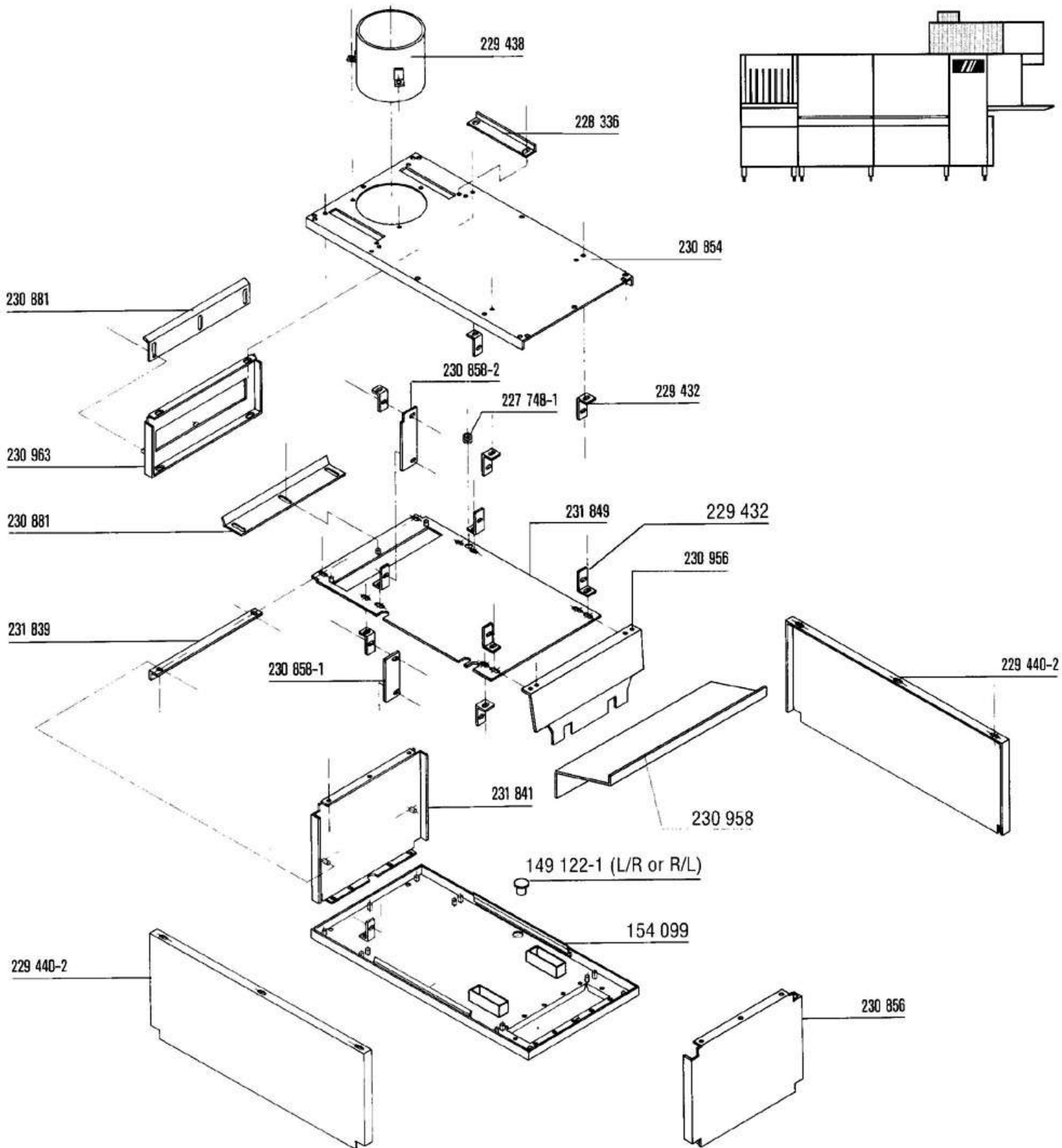
$\varnothing 6,4$ -602-286

602 570 - CLM M 6 x 16

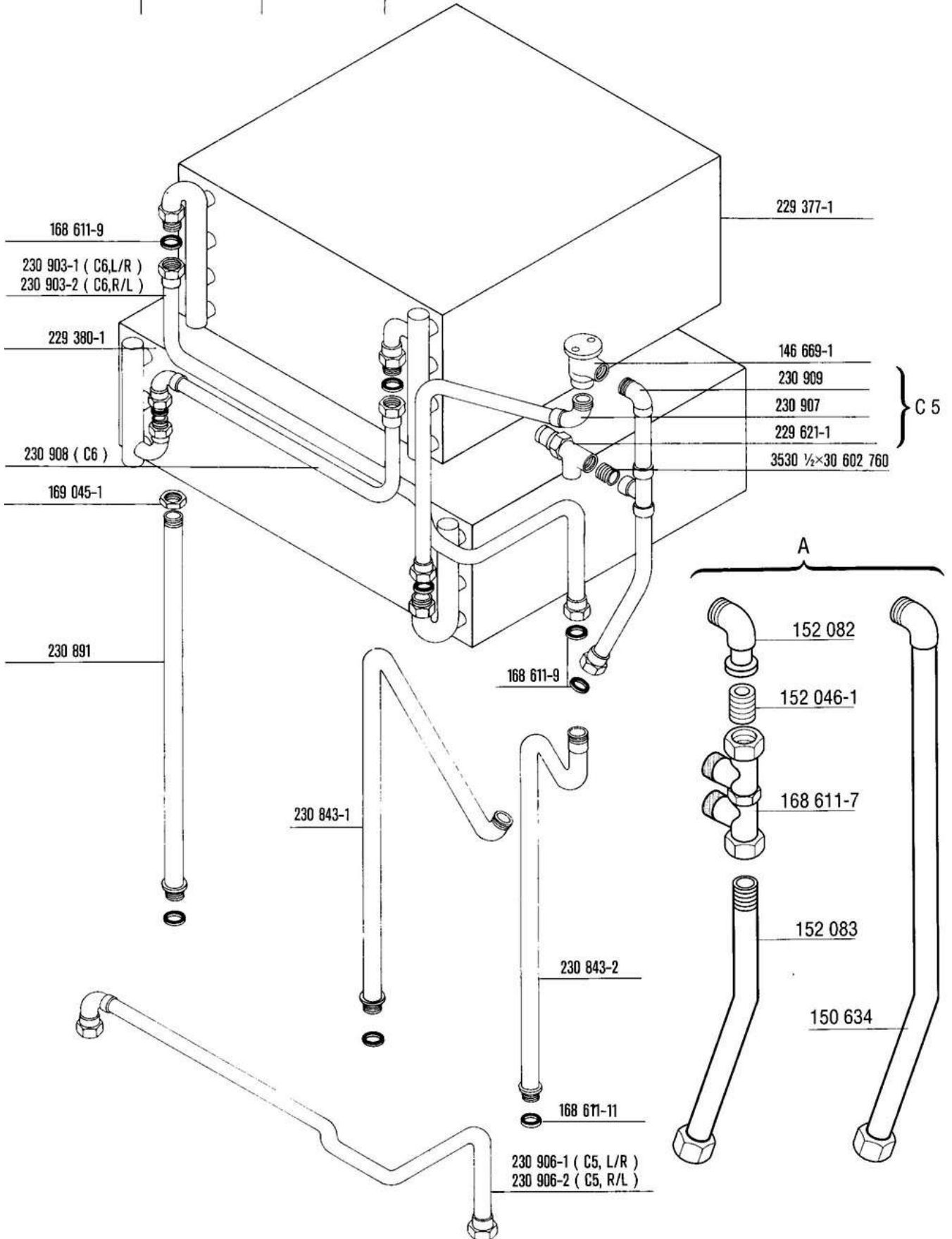
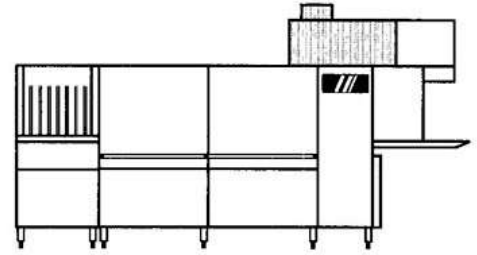


Condenser - housing  
Condenseur - habillage  
Kondensator - Gehäuse  
kondensator - bekleiding

CX-CA  
CX-CB



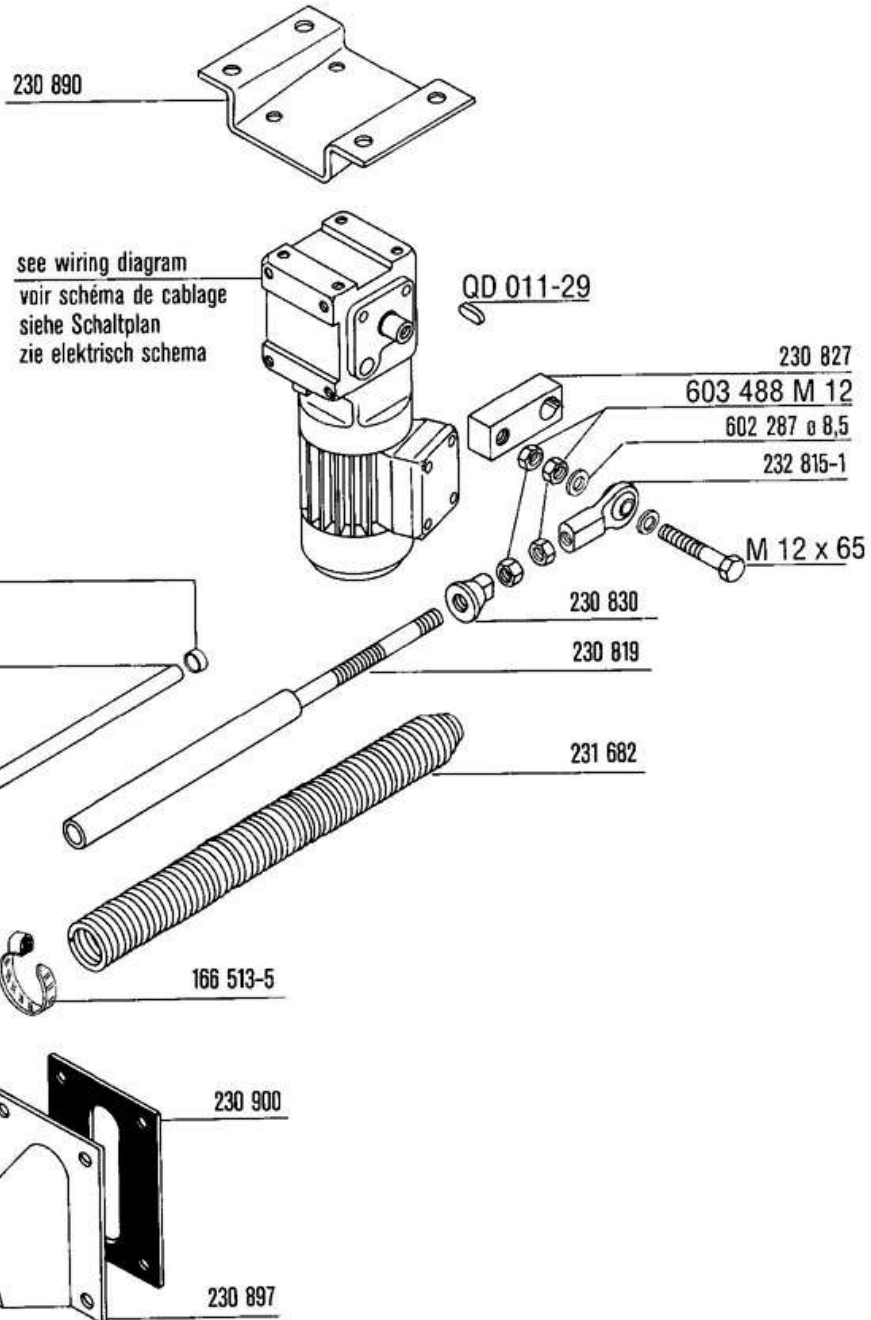
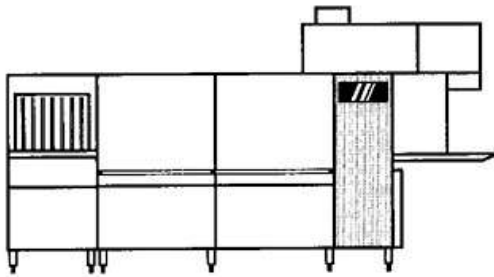
| A             |                      |                                 |         |
|---------------|----------------------|---------------------------------|---------|
| C 5           |                      | C 6                             |         |
| FRANCE EXPORT | RFA                  | FRANCE EXPORT                   | RFA     |
| 150 634       | 230 909<br>229 621-1 | 152 082<br>152 046-1<br>152 083 | 150 634 |





Drive unit  
Entrainement  
Antrieb  
Aandrijving

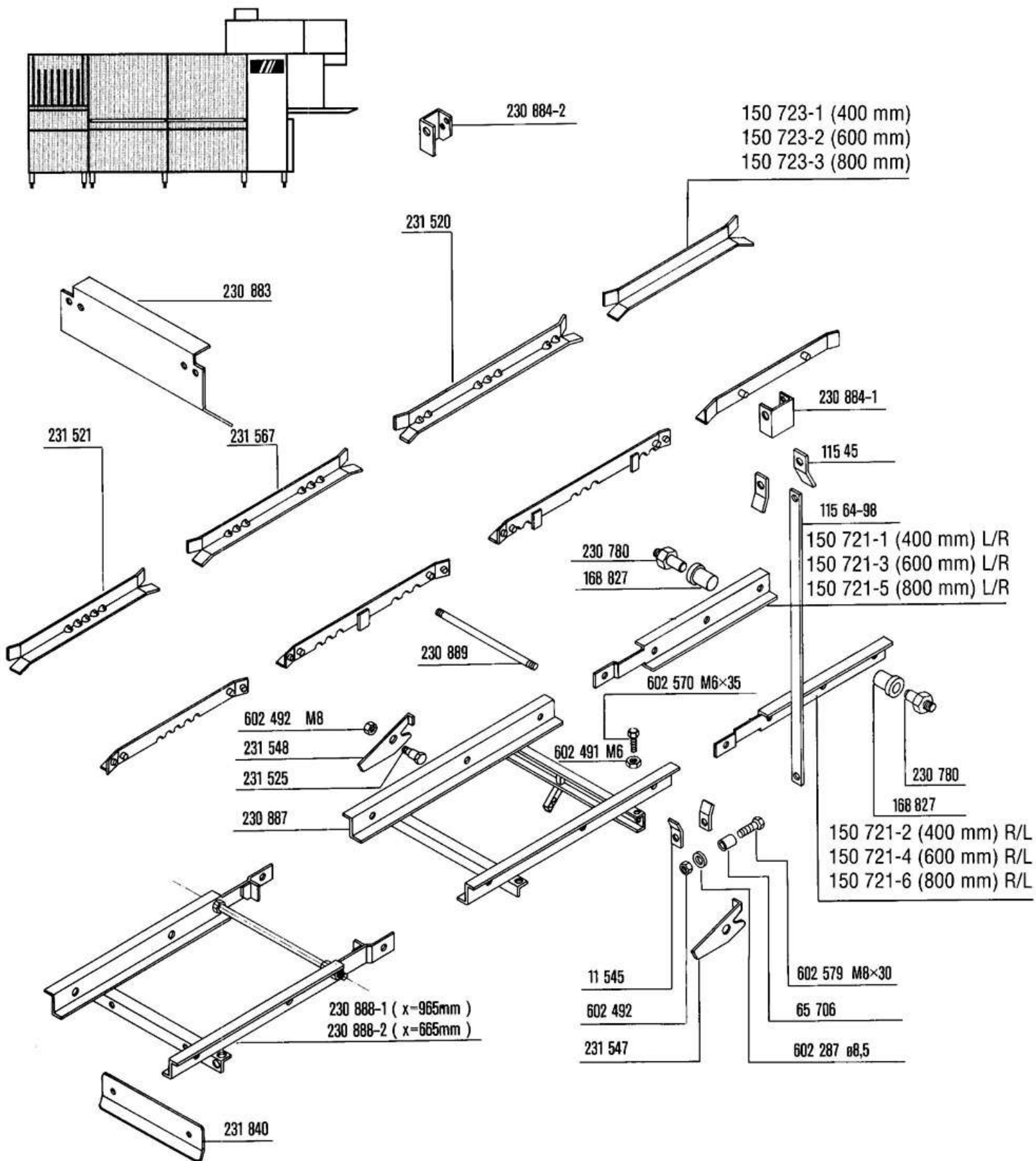
CX-CA  
CX-CB

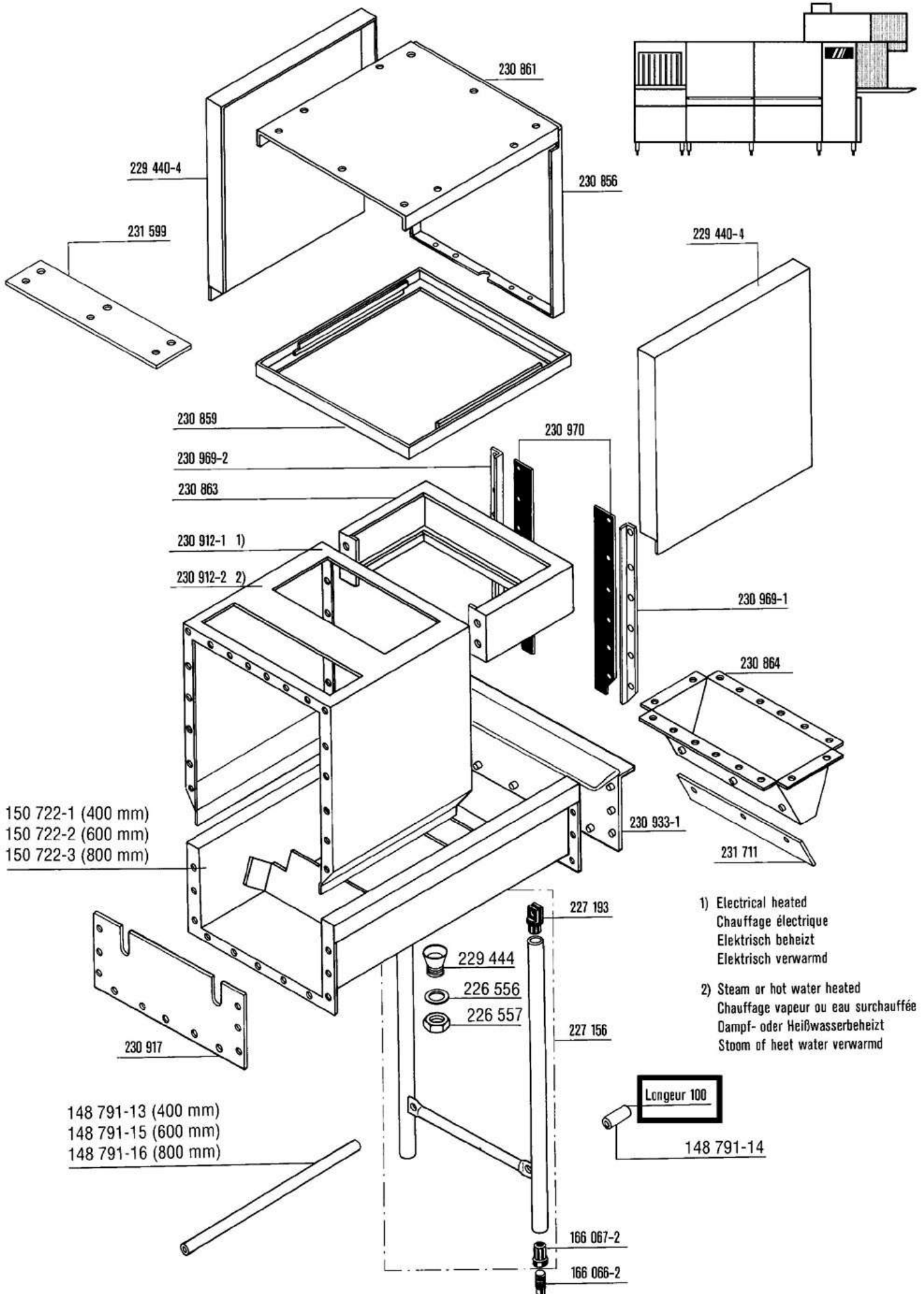


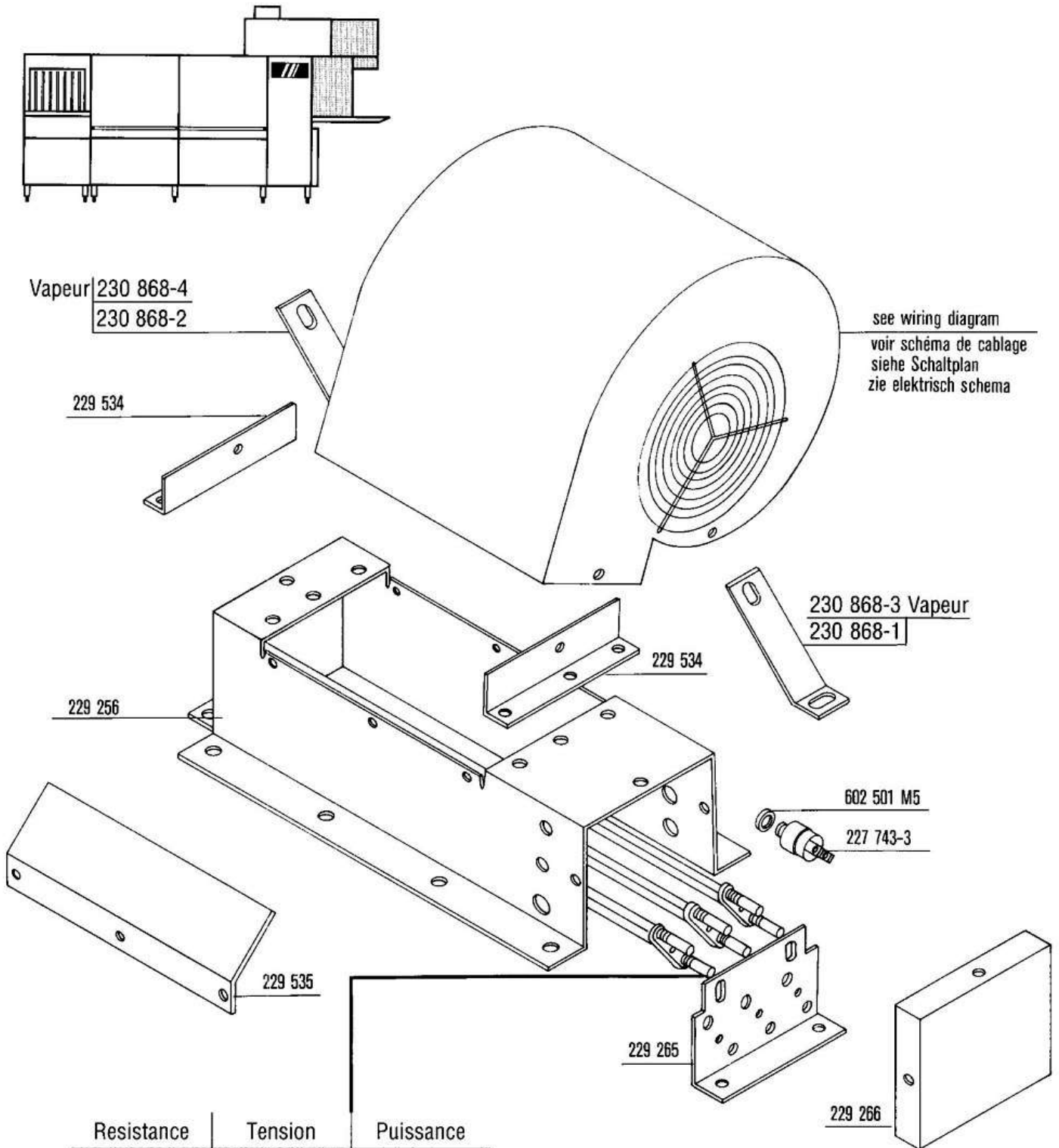


Conveyor & tracks  
Berceau & rails  
Schwingrahmen & Laufschienen  
Zwaai raam & spoorweg

CX-CA  
CX-CB







| Resistance | Tension | Puissance |
|------------|---------|-----------|
| 229 189-1  | 220 V   | 3000 W    |
| 229 189-2  | 240 V   |           |
| 229 189-3  | 254 V   |           |
| 229 189-4  | 220 V   | 2000 W    |
| 229 189-5  | 240 V   |           |
| 229 189-6  | 254 V   |           |
| 229 189-7  | 277 V   | 3000 W    |
| 229 189-8  | 220 V   | 1500 W    |
| 229 189-9  | 240 V   |           |
| 229 189-10 | 254 V   |           |